



Solar PV

Adesolar® by Adexsi UK

adexsiUK
adesolar®

SOPRASOLAR
SOPREMA
GROUPE



Overview

Adexsi UK are a recognised authority in the design, manufacture and installation of Smoke Extract and Environmental Ventilation Systems for all commercial applications.

ADESOLAR is an Adexsi brand, using the latest photovoltaic technology and design knowledge to provide PV systems for all commercial applications.

Together with our aftercare and maintenance services, Adexsi UK offer a combined rooftop approach.

With 20 year warranties for PV installations on any new Soprema roof coverings for both new build and renovation projects, backed by over 100 years of development and experience that only Soprema can offer.



- Soprema UK - Experts in waterproofing and insulation since 1908
- Soprasolar® - A subsidiary of Soprema for building-integrated innovative photovoltaic solutions and applications
- Adexsi UK - Specialists in roof-mounted ventilation solutions.
- Adesolar® - Photovoltaic solutions, design, installation, commissioning and service
- Adevolt® - EV Charging



Headlines

As the calls for action on climate change increase, renewable energy sources such as Solar PV will play a significant part in the move away from fossil fuels.

Recent advances in Solar PV technology mean that roof spaces can now generate up to 35% more energy than they did just 5 years ago. Many factors including new cell technology, improved efficiency, larger panels, and inverters surpassing 98% efficiency, have all combined to provide better value than ever before from Solar PV.

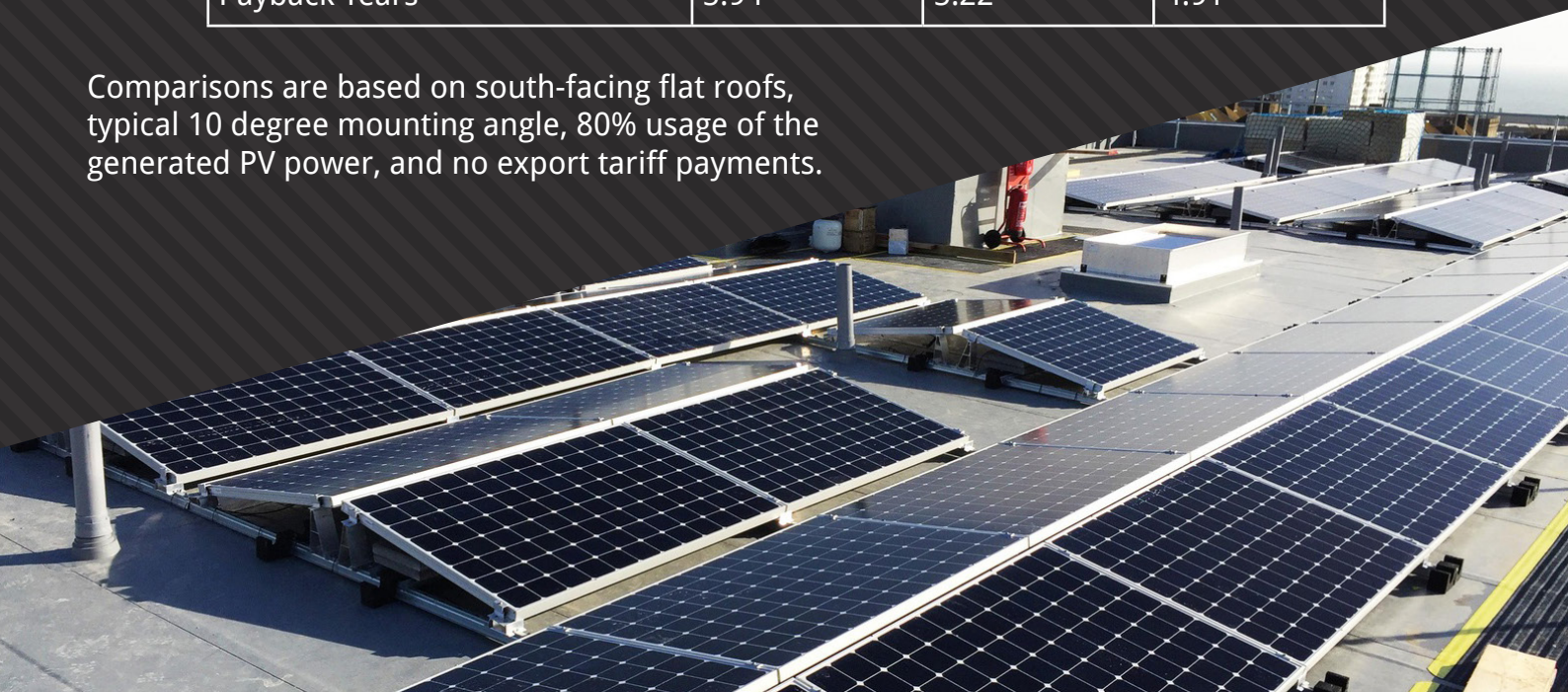
Solar PV now often represents the most affordable solution to offset a building's carbon footprint and reduce running costs for the owner or landlord. With the lowest maintenance costs of all renewable technologies and very few faults, Solar PV offers a secure investment.

Without feed in tariff payments or additional financial incentives, PV systems are now paying for themselves in shorter periods. These payback periods can usually be further reduced with a smart export meter and supplier tariff.

Typical installation cost comparison:

System Output (kWp)	20kW	50kW	100kW
Annual Generation (kWh)	18,152.94	45,382.35	90,764.69
Annual Energy Saving @ 80% Usage	£2526.89	£6317.22	£12,634.44
Average UK Energy Cost	£0.174	£0.174	£0.174
Typical System Cost	£15,000.00	£33,000.00	£62,000.00
Payback Years	5.94	5.22	4.91

Comparisons are based on south-facing flat roofs, typical 10 degree mounting angle, 80% usage of the generated PV power, and no export tariff payments.



Technical Solutions

Mounting Solutions for All Roof Types:

Flat Roofs - Ballasted
Flat Roofs - Non-Ballasted
Metal Sheet Roofs
Standing Seam Roofs
Concrete Tiles, Clay Tiles and Slate
Roof-Integrated Systems
Ground Mounted Systems

Solar PV Panels for All Budgets and Applications:

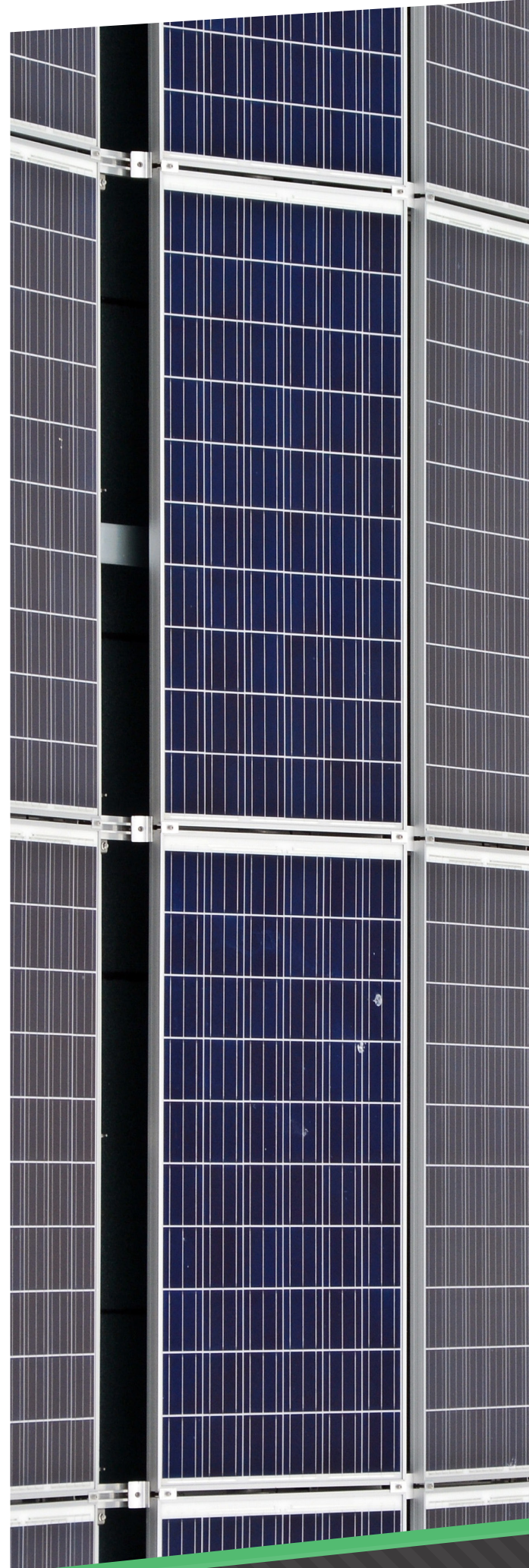
Premium High Efficiency Panels
Inexpensive Standard Efficiency Panels
BiFacial & High Output Panels
Small Frame Panels
All Black Panels

Solar PV Inverter Solutions:

Premium String Inverters
Inexpensive String Inverters
SolarEdge Optimised Systems
Remote Performance Monitoring
BMS Network Monitoring
Generation Display Screens
Firefighter Isolation Solutions

Regulations, Guides and Standards:

- BRE Digest 489: 2004 Wind loads on roof-mounted photovoltaic
- BS EN 61853-1:2011 Photovoltaic (PV) module performance
- BS EN 62446-1:2016 Photovoltaic (PV) systems testing, documentation and maintenance. Grid connected systems - documentation, commissioning tests and inspection
- BS EN IEC 62446-2:2020 Photovoltaic (PV) systems testing, documentation and maintenance
- BS EN 1991-1-4:2005 Eurocode 1: Wind Actions on Structures.
- Our Solar PV systems have the potential to count towards BREEAM.



Soprasolar by Soprema

As part of the Soprema Group, Adexsi UK are an approved installer of Soprasolar mounting solutions.

Soprasolar systems are compatible with all Soprema roof coverings; bitumen, PVC or TPO.

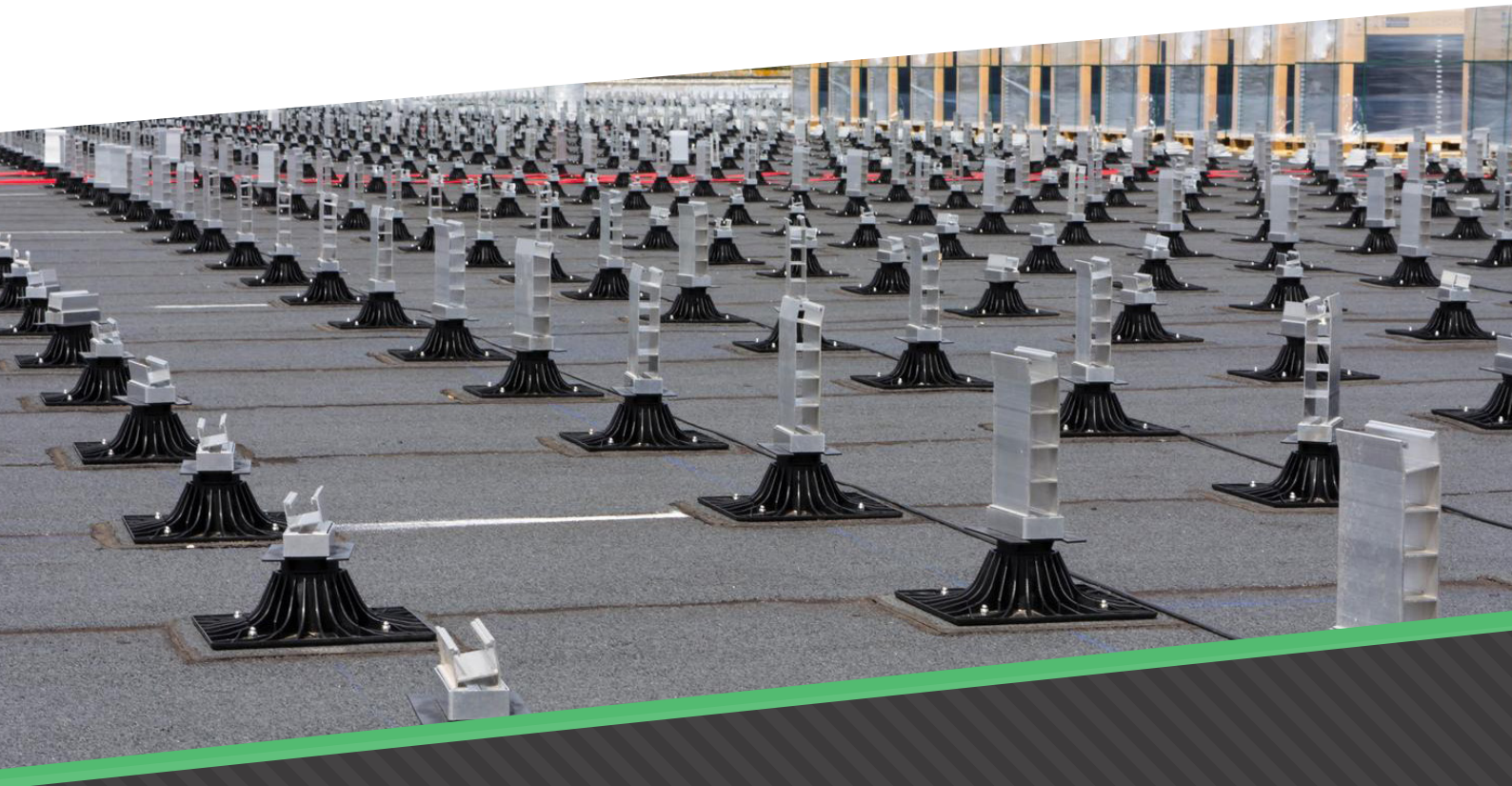
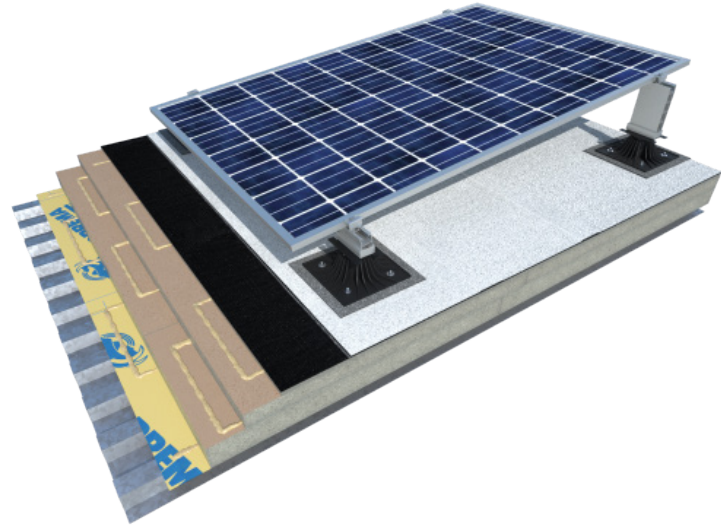
Adhered to the roof surface - no ballast weight required and no penetration through the roof covering.

20 year warranty on the entire system for ultimate peace of mind.

Panels can be mounted at 10 degrees to improve generation yield, or mounted flat or in an East/West split to maximise the roof space.

By combining Bi-Facial panels with the Soprema Energy Plus roof covering, a system can generate up to 15% more energy from the same roof space.

By using the latest software and in-house expertise, we can maximise a roof space to provide the best possible annual yield or most cost-effective solution to meet a specified budget.



adesmoke[®]

adeprotect[®]

adesolar[®]

adevolt[®]

adelight[®]

adeshade[®]