

Lighttube SPOT

TECHNICAL INSTRUCTIONS FOR INSTALLATION



NATURAL
LIGHTING

BLUETEK 

- Saves energy by letting in natural light through the roof
- Reduces heat loss thanks to improved upstand insulation



EN 1873



Technical instructions for the installation of the Lightube home

This installation must be carried out by professionals.
Make sure that the standard and regulatory documents adapted to the type of roofing are respected. The waterproofing of the roof is guaranteed by the installer.
Make sure the site is secure, especially the roof access.



Tools to be provided



Cutter



Measuring tape



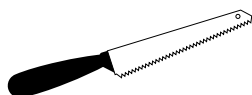
Socket adaptor Hex



Screwdriver



Sheet metal shears



Cutting tool adapted to the ceiling



Phillips screwdriver



Phillips socket



Provided by Bluetek



x1

Dome



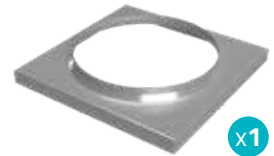
x1

Scatter



x2

Straight tube



x1

Curb mount cover upstand



x1

Finish ring



x1

Ring frame to go inside the plaster board ceiling



x1

Home diffuser



Neoprene gasket



x1

Brush seal with and without plastic center film



x1

Aluminium sealing tape



x1

Gloves for tube/elbow manipulation



x8 Ø33
x10 Ø53

*Screw domed head Phillips
type 4.2 x 13*



x4 Ø33
x6 Ø53

*Screw domed head
4.2 x 25*



x12 Ø33
x16 Ø53

*Hexagonal head
5,5 x 25*



*Stainless screw domed head
4.2 x 25
(with seal washer)*

OPTIONS



Upstand for waterproofed roof



Upstand for rénovation



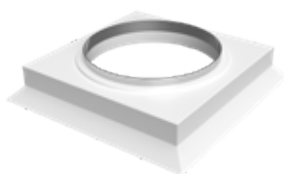
Upstand for dry roof



Curb PVC



Flashing



Insulated curb top



Dimmer kit



Elbow A with crimping

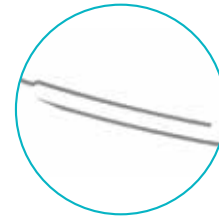
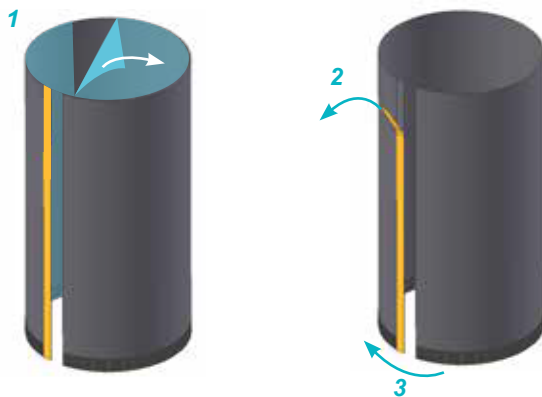


Elbow B without crimping



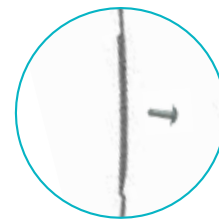
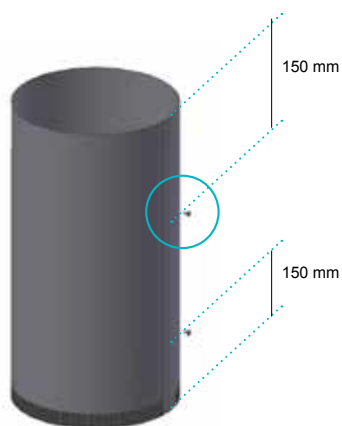
#1 PRE-ASSEMBLY OF STRAIGHT TUBE

A



Flat spot for assembly point

B



2 screws 4.2 x 13

C



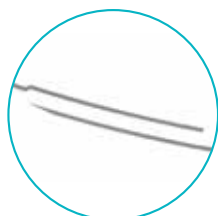
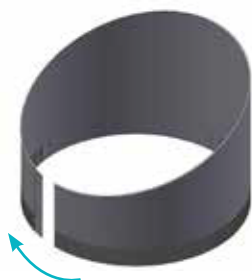
Seal and smooth the tape

Assembly

ONLY IF YOU CHOSE ELBOW OPTION

#2 PRE-ASSEMBLY OF THE ELBOW

A



Flat spot for assembly point



Screw



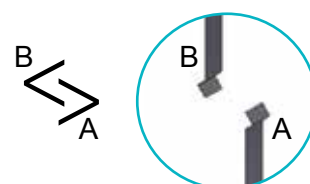
Seal and smooth the tape

B

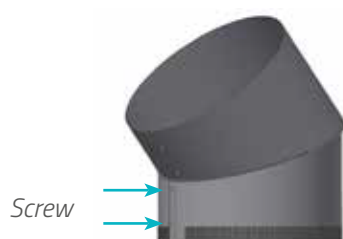
Assemble the two elbows parts



Insert elbow gorge B inside gorge A



C



Screw

Seal and smooth the tape



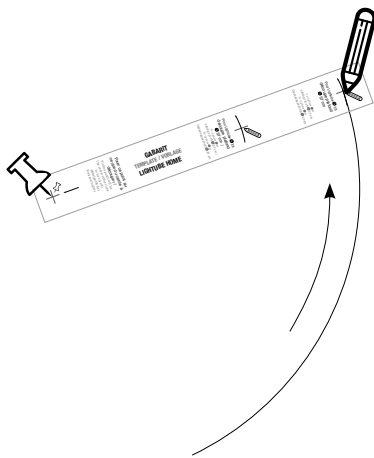
By turning each part to the opposite side, you will obtain an angle between 0° and 45°.



Assembly

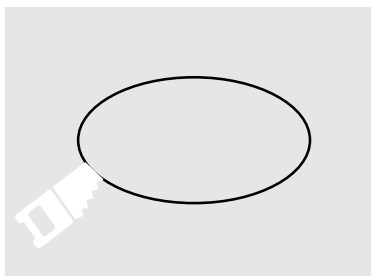
#3 ASSEMBLY OF THE CIRCLE INSIDE CEILING

- A** Use the cutting template provided to mark the area which will be cut out of the ceiling.

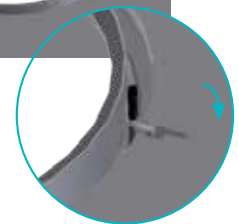


Tube Ø 33 cm : cut will be Ø 37 cm
Tube Ø 53 cm : cut will be Ø 57 cm

- B** Cut out the area using the appropriate cutting tool for your ceiling.



Glue the dust seal without center plastic film inside the frame ring as high as possible.



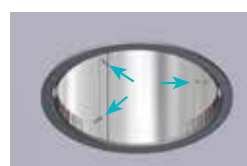
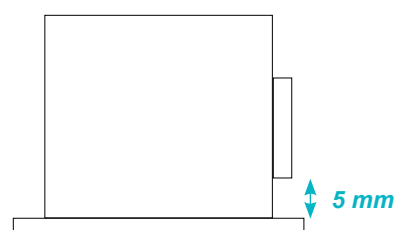
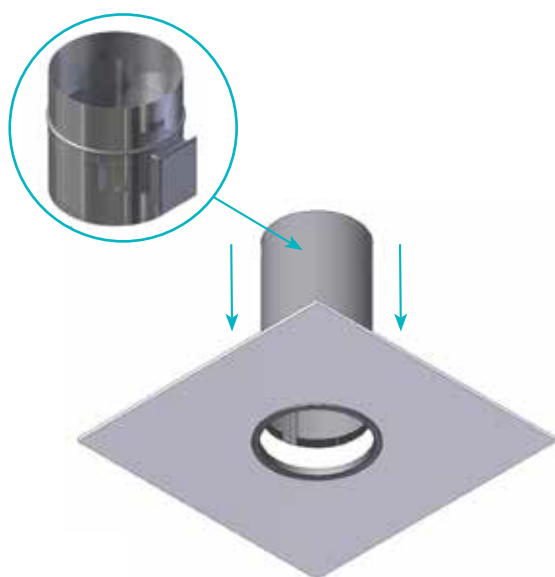
Tighten the screws to rest against the ceiling.

Assembly

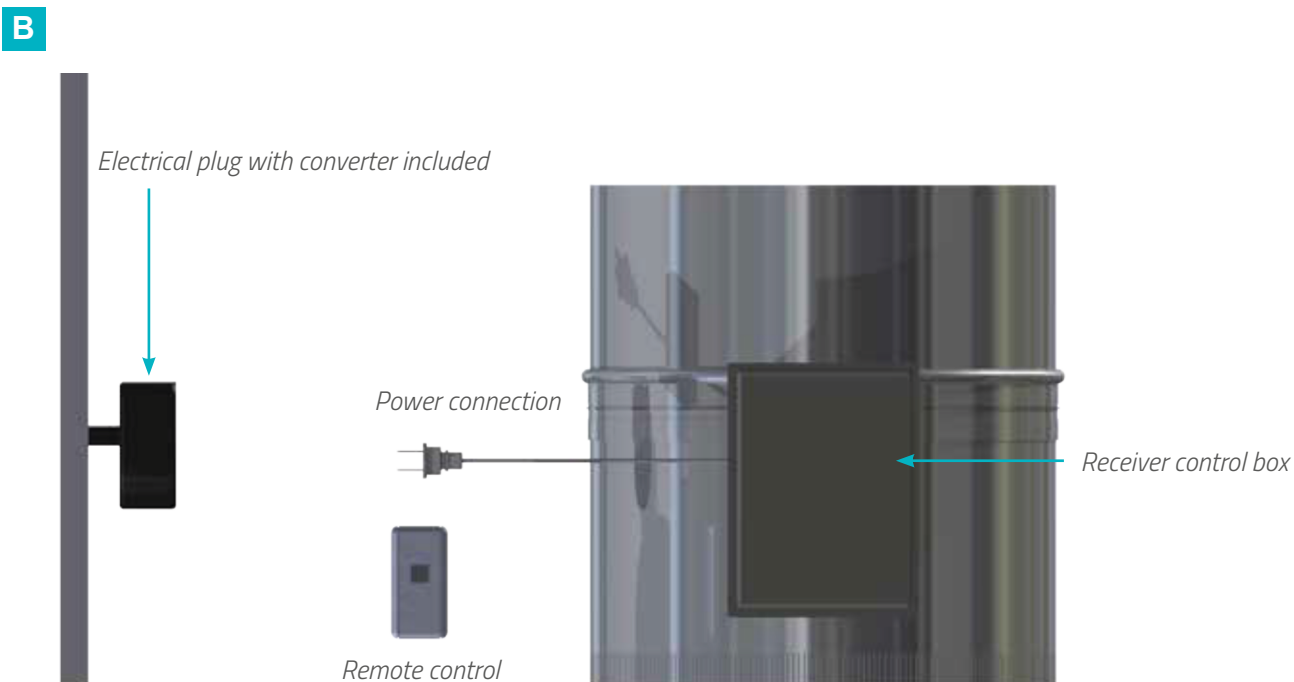
ONLY IF YOU CHOSE DIMMER OPTION

#4
ASSEMBLY OF DIMMER OPTION

A Insert the tube trough the aluminium frame ring.



3 screws 4.2 x 13

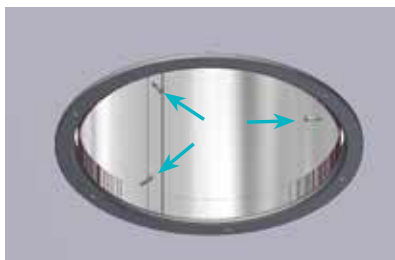
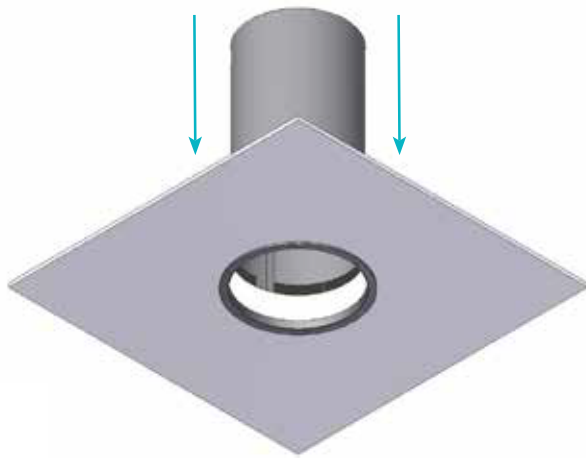


Press the button on the remote control once to activate the dimmer then press again to stop when you obtain the desired amount of light or darkness

Assembly

#4 TUBE ASSEMBLY

A *Insert the tube trough the aluminium frame ring.*



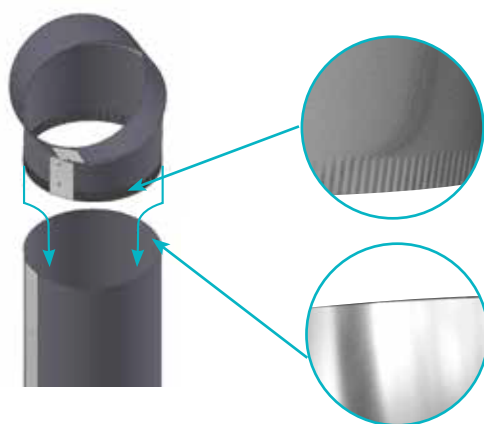
3 screws 4.2 x 13

#5 TUBE ASSEMBLY

Assemble tube (+elbows) starting from the diffuser to the upstand except the last straight tube going inside the upstand. *



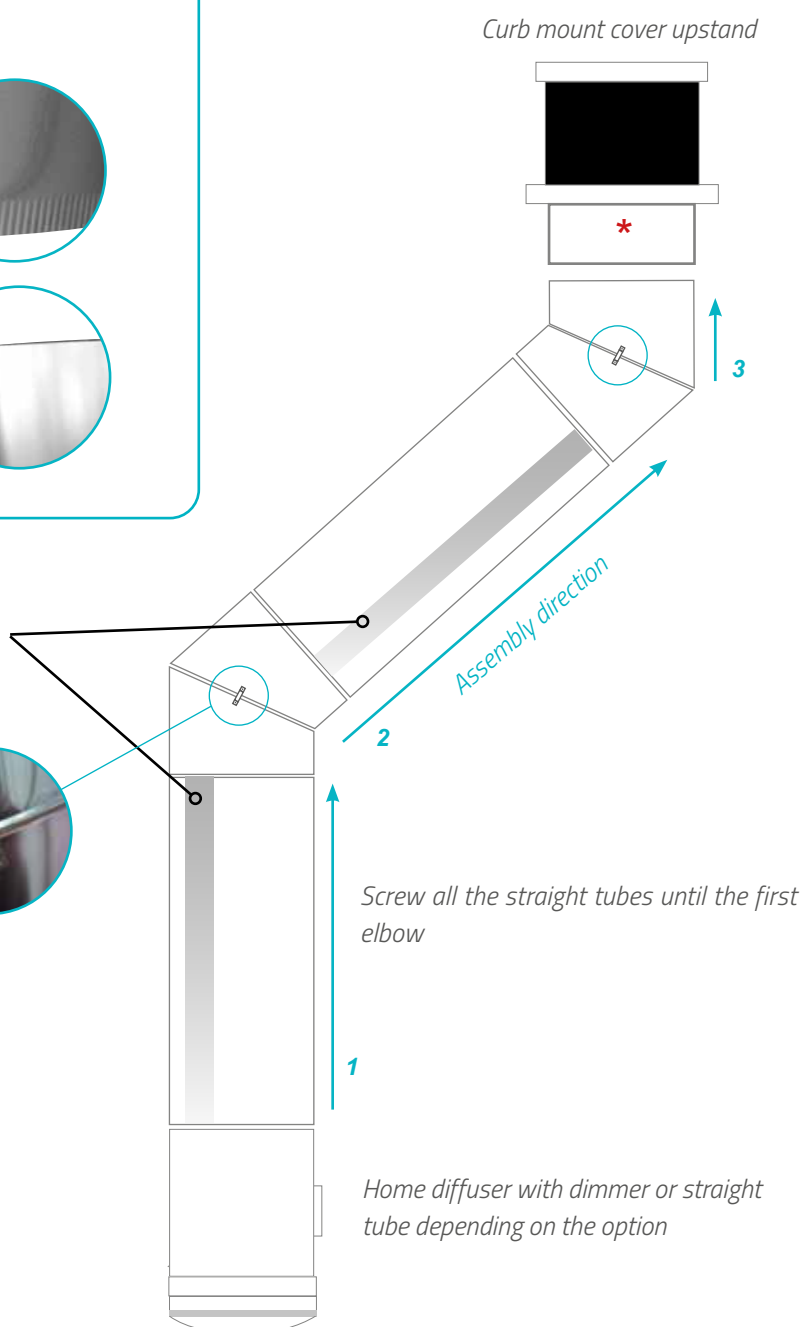
Take care to insert the embossed parts into the smooth lower parts.



Do not adjust all the tape on the same line going through all the installation

For elbows

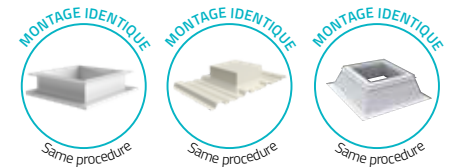
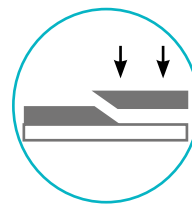
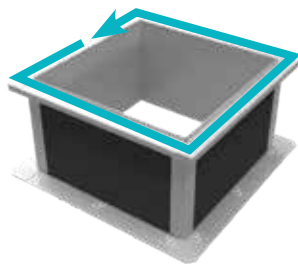
Between each part of the elbows, screw on a holding piece.



Assembly

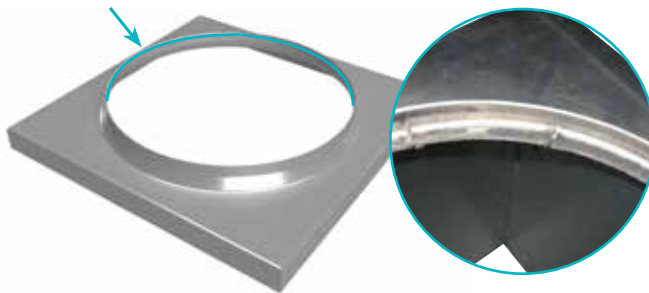
#6 UPSTAND ASSEMBLY

- A** Position the neoprene gasket on the upstand.

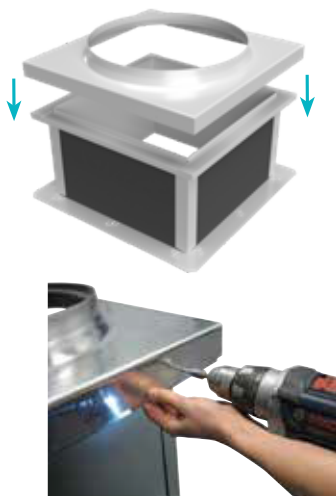


Advice: Do a bevel cut for the junction assembly of the neoprene gasket

- B** Glue the dust seal with the plastic in the center all around the top of the curb mount upstand cover (**10 mm from the top edge**).

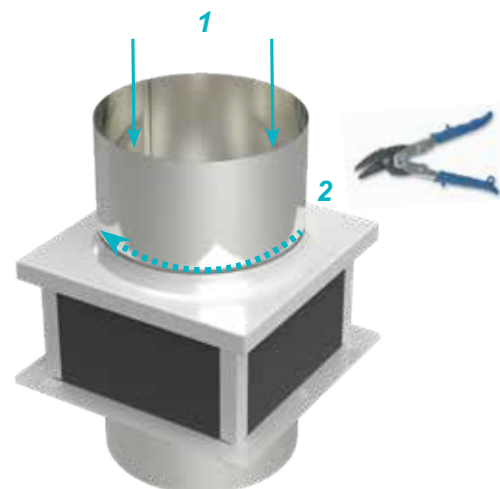


- C** Place the curb mount cover upstand on the upstand and fix it together.



Screw 5,5 x 25

- D** Insert the last part of the tube trough the curb mount cover upstand and cut off the protruding part.

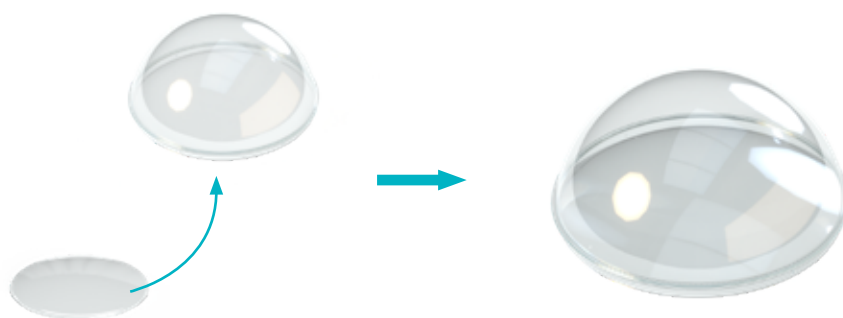
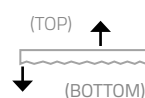


#6 UPSTAND ASSEMBLY

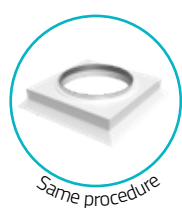
A Push the scatter plate inside the dome until it fits inside the aluminum ring



Make sure the prismatic part is facing downwards.



B Place the dome on the curb mount cover upstand and fix it.



Stainless screw domed head
4.2 x 25
(with seal washer)

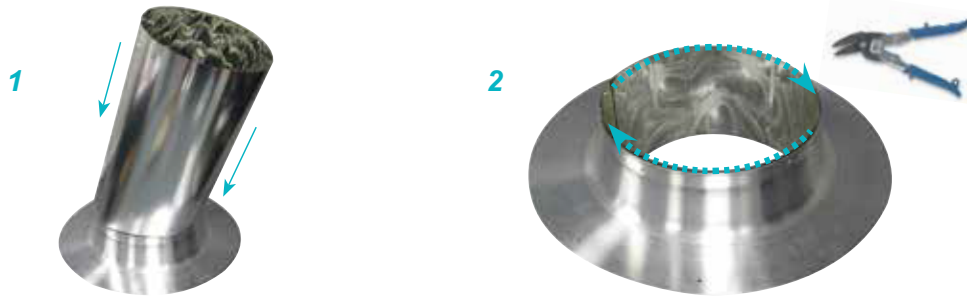


Assembly

ONLY IF YOU CHOSE FLASHING OPTION

#7 ASSEMBLY OF FLASHING OPTION

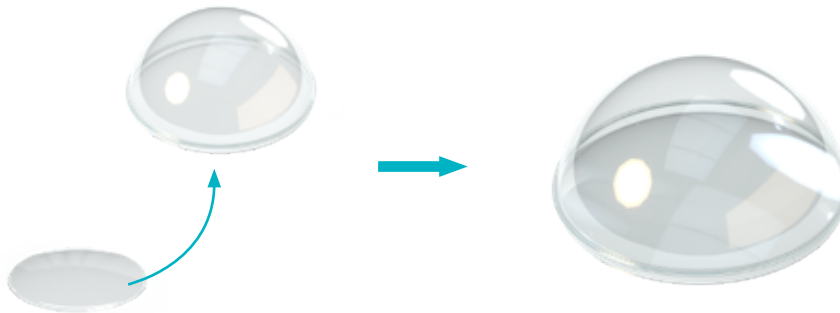
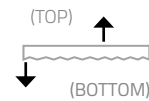
A Insert the tube trough the flashing. Cut off the protruding part.



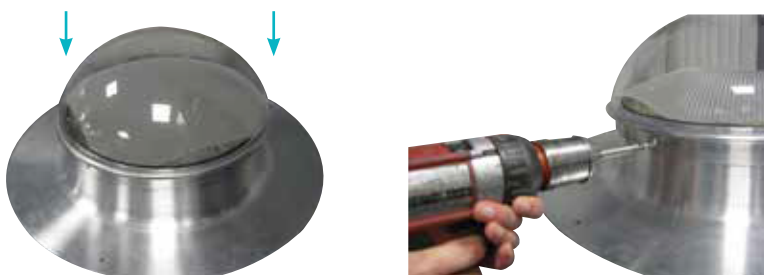
B Push the scatter plate inside the dome until it fits inside the aluminum ring



Veiller à orienter la partie prismatique vers le bas.
Make sure the prismatic part is facing downwards.



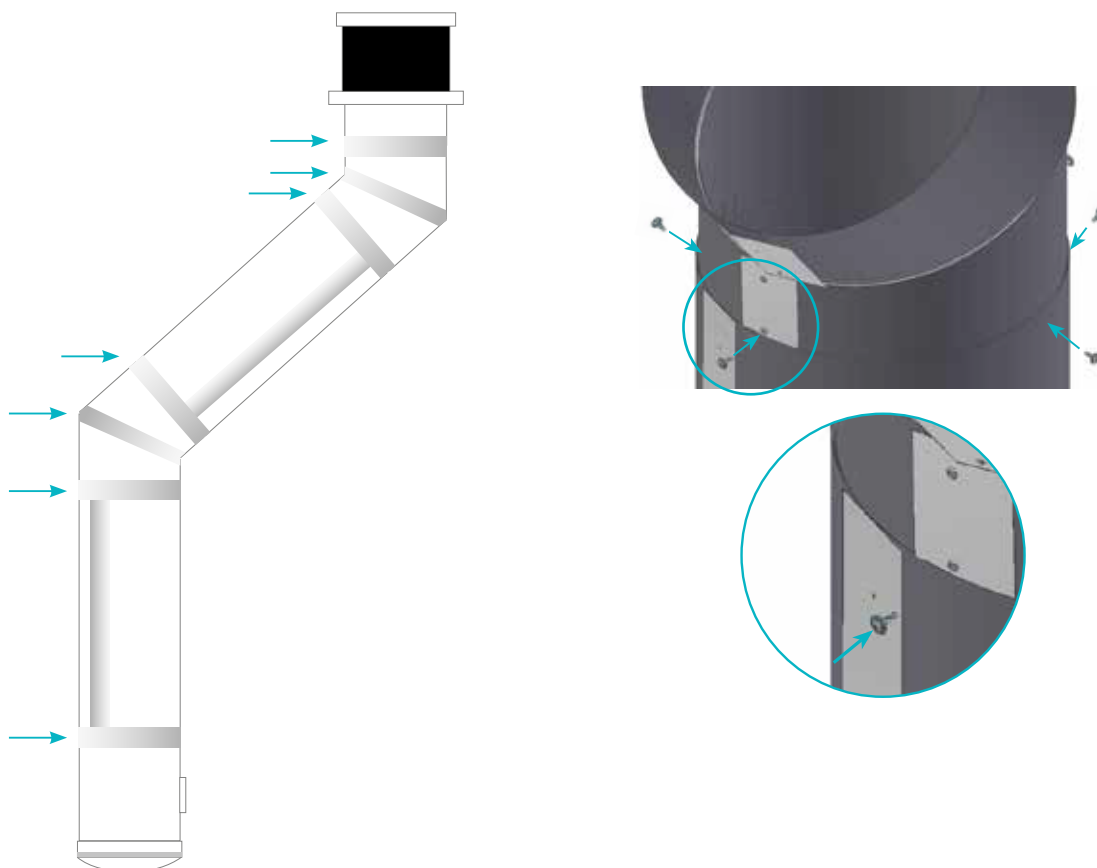
C Place the curb mount cover upstand on the flashing and fix it together.



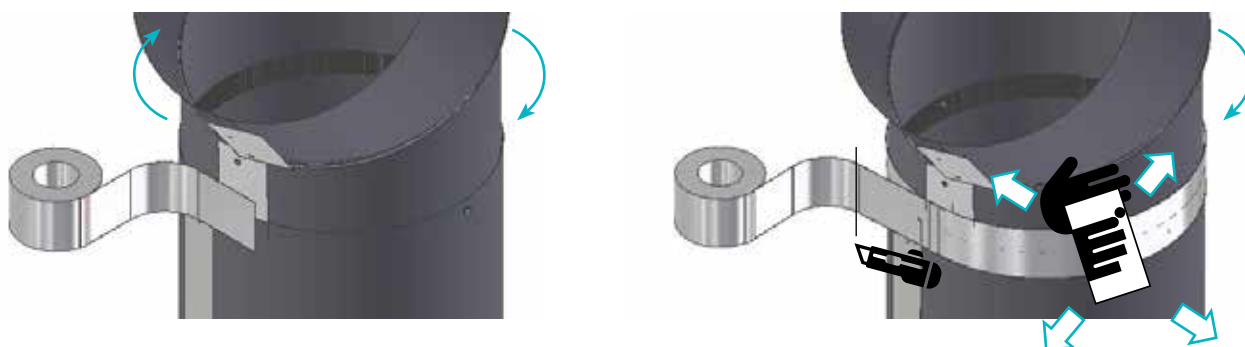
4 screws position equal for 33cm
6 screws position equal for 45 cm

#8 FINAL ASSEMBLY

A Once everything is in position screw everything together.



B Finish by covering the joints with the aluminium adhesive.

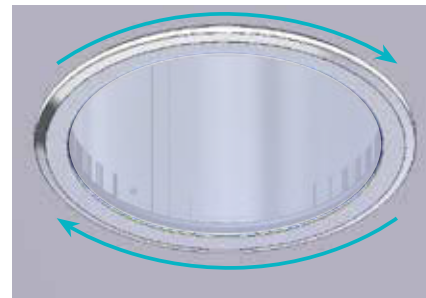
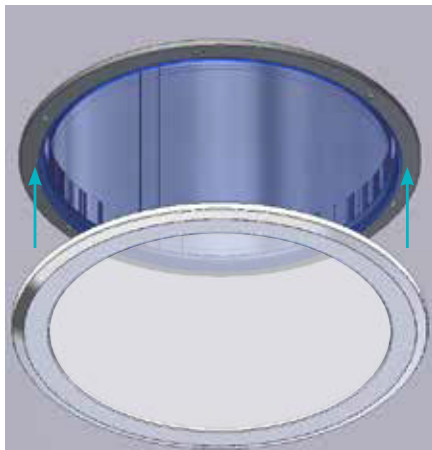


Assembly

#8 FINAL ASSEMBLY

A

Place the finishing ring on the frame ring. Secure it by turning it a quarter turn.



FINISHED ASSEMBLY





adexsiUK

'Find A Better Way'

contact@adexsiuk.com
www.adexsiuk.com

ADEXSI AROUND THE WORLD



// UNITED KINGDOM

Adexsi UK
0044 845 084 0555

// ROMANIA

Adexsi Lumina
0040 723 273 513

// GERMANY

Service technico-commercial
0049 213 118 30

// FRANCE

Service Technico-commercial international
☎ 0033 1 60 37 79 54 / 0033 2 47 55 36 38
☎ 0033 1 60 37 79 65 / 0033 2 47 55 36 01

// MOROCCO

Adexsi Maroc
00212 5 22 67 22 58

// LATIN AMERICA

Service technico-commercial
0051 967 00 60 63

bluetek