

Lighttube OFFICE

TECHNICAL INSTRUCTIONS FOR INSTALLATION



NATURAL
LIGHTING

BLUETEK 

- Saves energy by letting in natural light through the roof
- Reduces heat loss thanks to improved upstand insulation



EN 1873



Technical instructions for the installation of the Lighttube office

This installation must be carried out by professionals.
Make sure that the standard and regulatory documents adapted to the type of roofing are respected. The waterproofing of the roof is guaranteed by the installer.
Make sure the site is secure, especially the roof access.



Tools to be provided



Cutter



Measuring tape



Socket adaptor Hex



Screwdriver



Sheet metal shears



Cutting tool adapted to the ceiling



Phillips screwdriver



Phillips socket



Provided by Bluetek



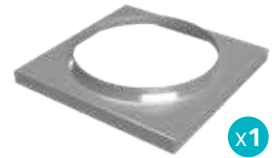
Dome



Scatter



Straight tube



Curb mount cover upstand



Office difuser

OR



LED Office difuser



Neoprene gasket



Brush seal with and without plastic center film



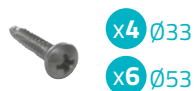
Aluminium sealing tape



Gloves for tube/elbow manipulation



*Screw domed head Phillips
type 4.2 x 13*



*Screw domed head
4.2 x 25*



*Hexagonal head
5,5 x 25*



*Stainless screw domed head
4.2 x 25
(with seal washer)*



OPTIONS



Upstand for waterproofed roof



Upstand for rénovation



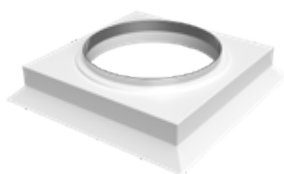
Upstand for dry roof



Curb mount cover upstand



Flashing



Insulated curb top



Dimmer kit

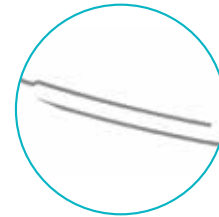
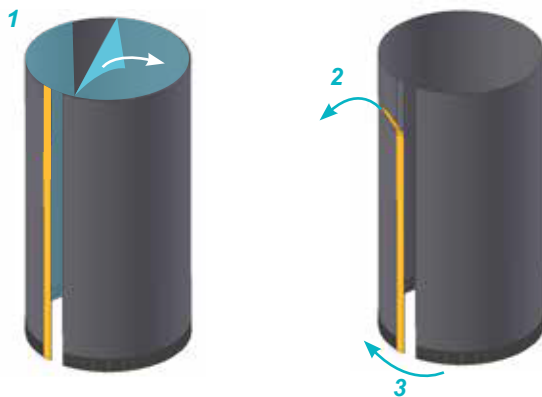
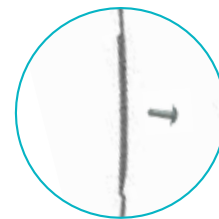
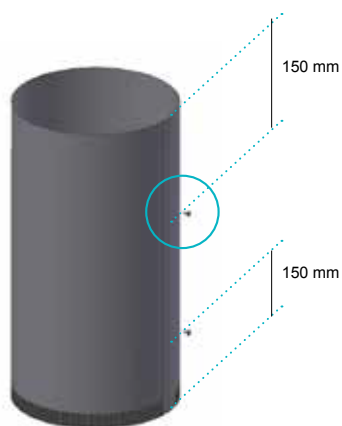


Elbow A with crimping



Elbow B without crimping

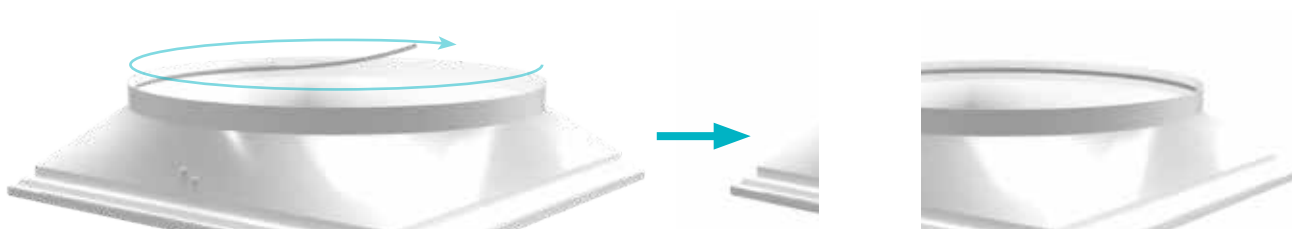
#1 PRE-ASSEMBLY OF STRAIGHT TUBE

A

Flat spot for assembly point
B

2 screws 4.2 x 13
C

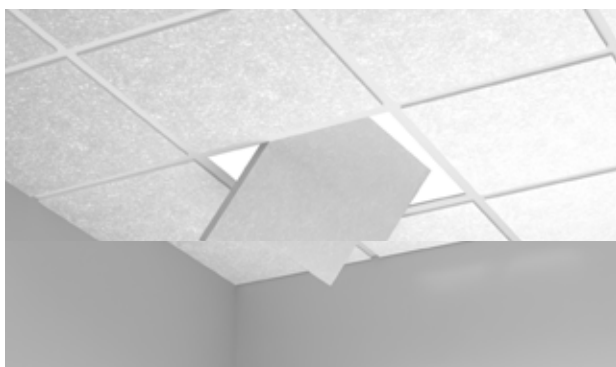
Seal and smooth the tape

#3 ASSEMBLY OF THE DIFUSER INSIDE THE FALSE CEILING

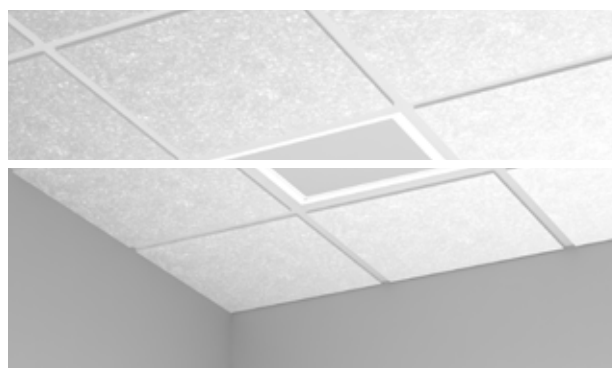
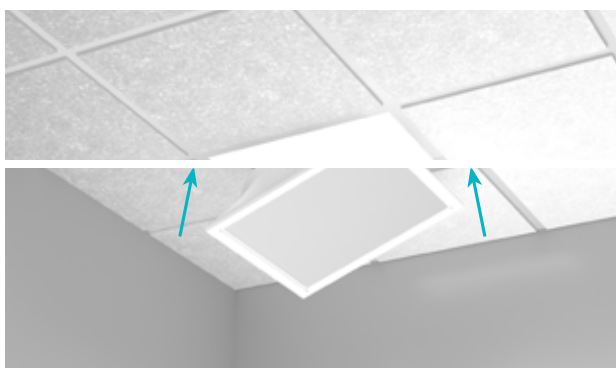
- A** *Position the brush seal without the middle plastic film on the periphery of*



- B** *Remove the false ceiling tile at the desired location.*



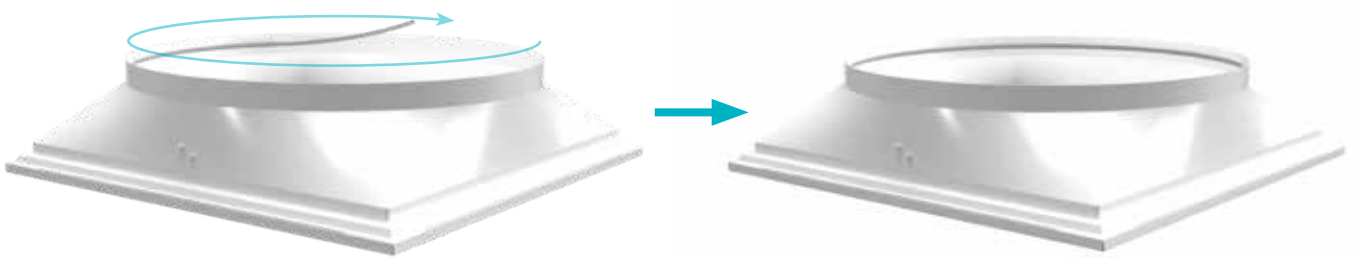
- C** *Put the Office diffuser in its place.*



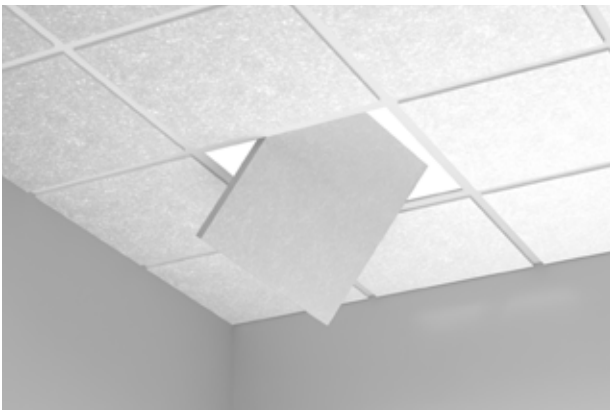
Assembly

#3 ASSEMBLY OF THE DIFUSER INSIDE THE FALSE CEILING

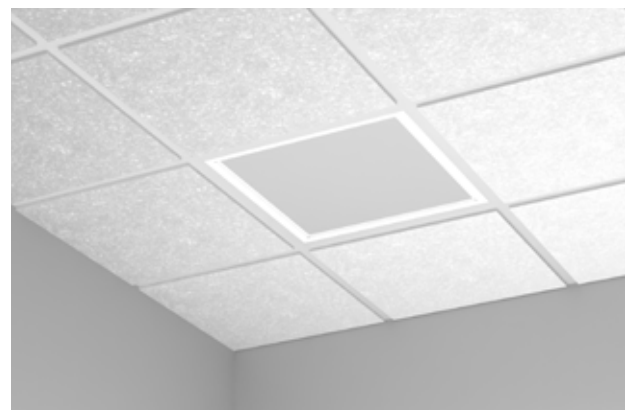
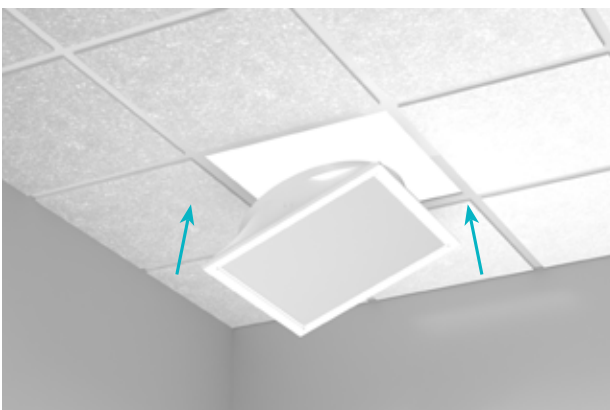
- A** *Position the brush seal without the middle plastic film on the periphery of the diffuser.*



- B** *Remove the false ceiling tile at the desired location.*



- C** *Put the Office diffuser in its place.*

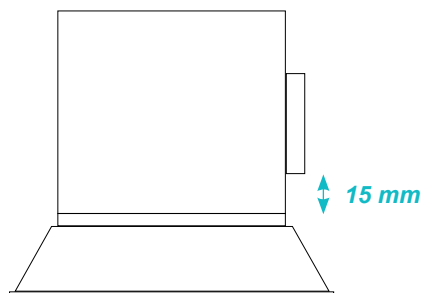
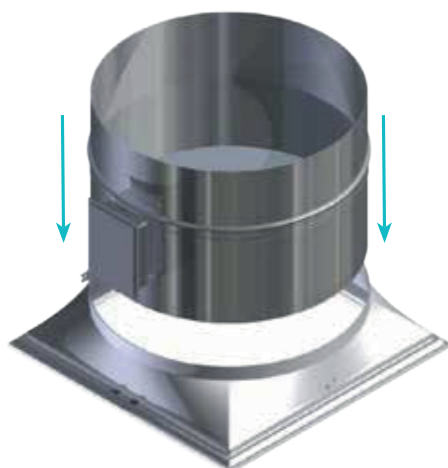


Assembly

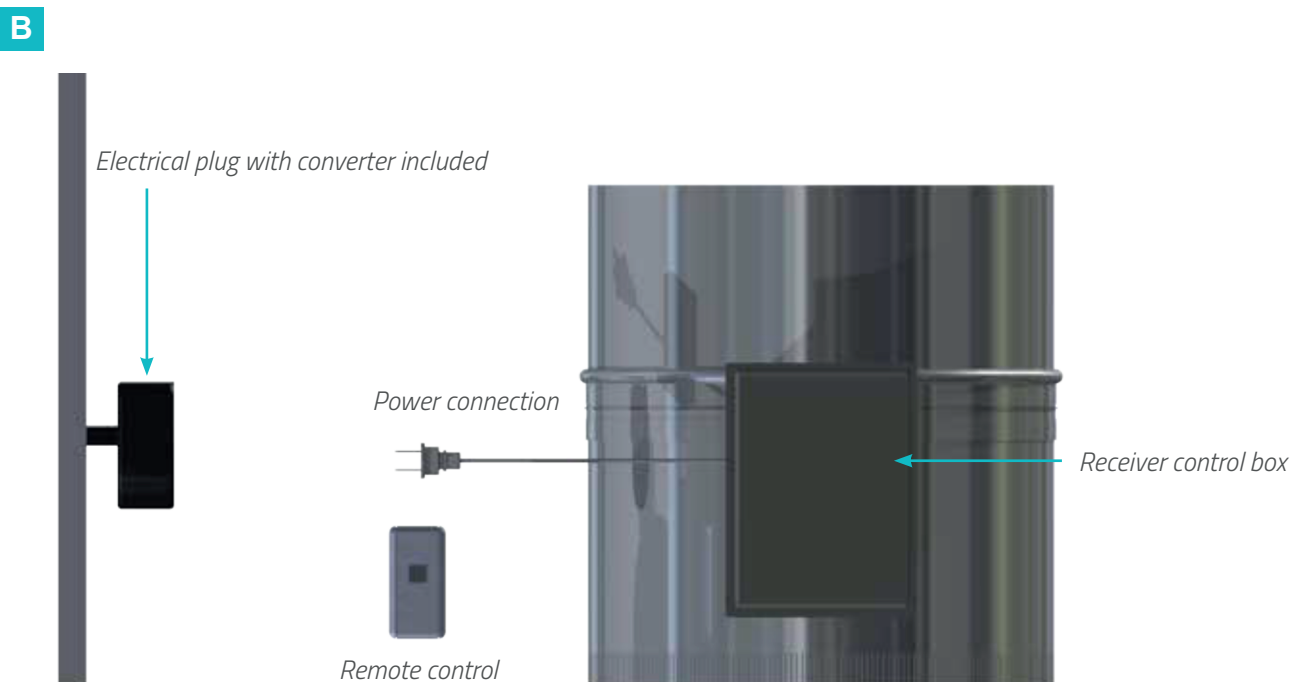
ONLY IF YOU CHOSE DIMMER OPTION

#4
ASSEMBLY OF DIMMER OPTION

A Insert and fix the tube trough the aluminium frame ring.



3 screws 4.2 x 13



Press the button on the remote control once to activate the dimmer then press again to stop when you obtain the desired amount of light or darkness

Assembly

#4 TUBE ASSEMBLY

A Insert the tube through the aluminium frame ring.



Only the crimped part goes inside the transition box

B Fix the duct with the diffuser.



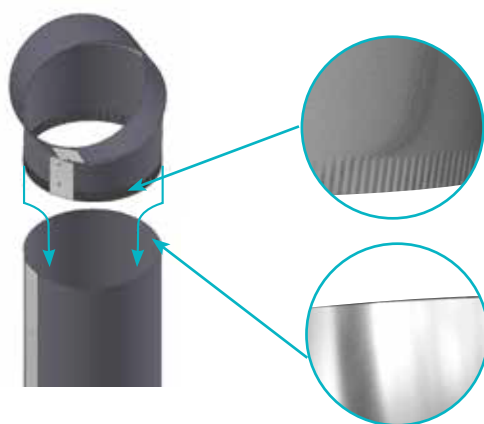
3 screws 4.2 x 13

#5 TUBE ASSEMBLY

Assemble tube (+elbows) starting from the diffuser to the upstand except the last straight tube going inside the upstand. *



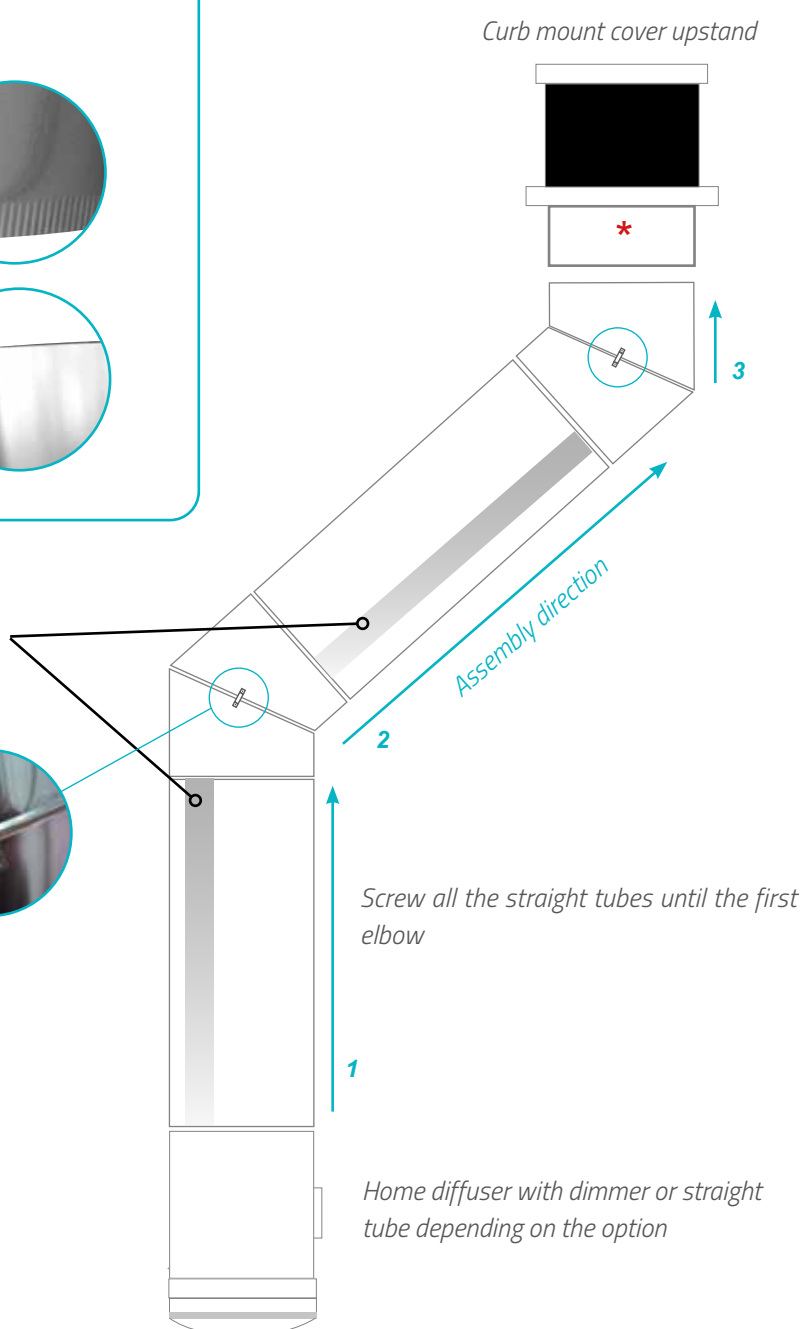
Take care to insert the embossed parts into the smooth lower parts.



Do not adjust all the tape on the same line going through all the installation

For elbows

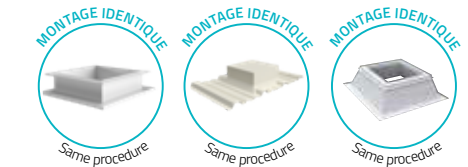
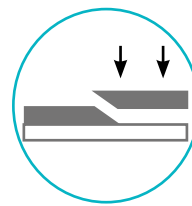
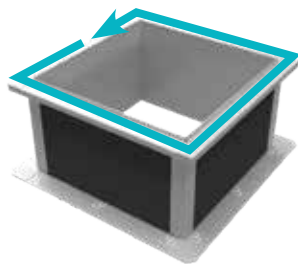
Between each part of the elbows, screw on a holding piece.



Assembly

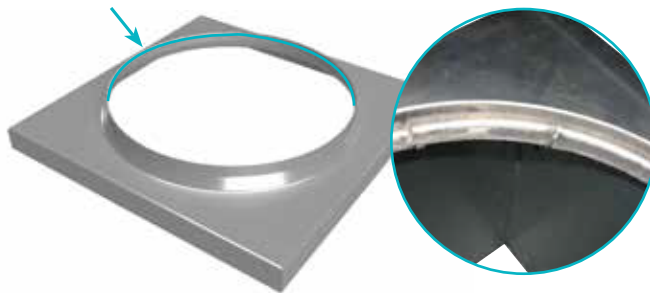
#6 UPSTAND ASSEMBLY

- A** Position the neoprene gasket on the upstand.

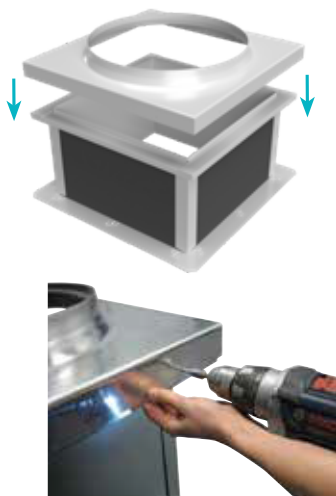


Advice: Do a bevel cut for the junction assembly of the neoprene gasket

- B** Glue the dust seal with the plastic in the center all around the top of the curb mount upstand cover (**10 mm from the top edge**).

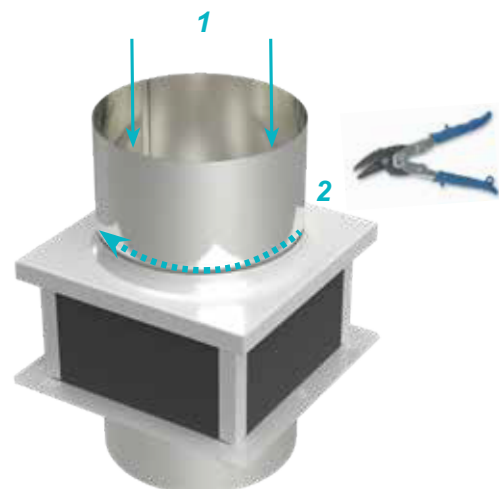


- C** Place the curb mount cover upstand on the upstand and fix it together.



Screw 5,5 x 25

- D** Insert the last part of the tube trough the curb mount cover upstand and cut off the protruding part.



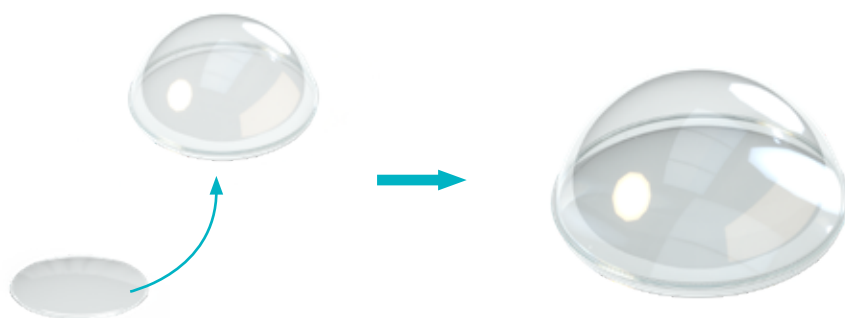
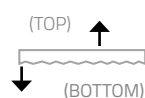
Assembly

#6 UPSTAND ASSEMBLY

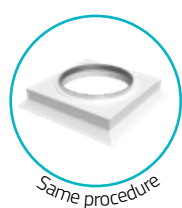
A Push the scatter plate inside the dome until it fits inside the aluminum ring



Make sure the prismatic part is facing downwards.



B Place the dome on the curb mount cover upstand and fix it.



Stainless screw domed head
4.2 x 25
(with seal washer)



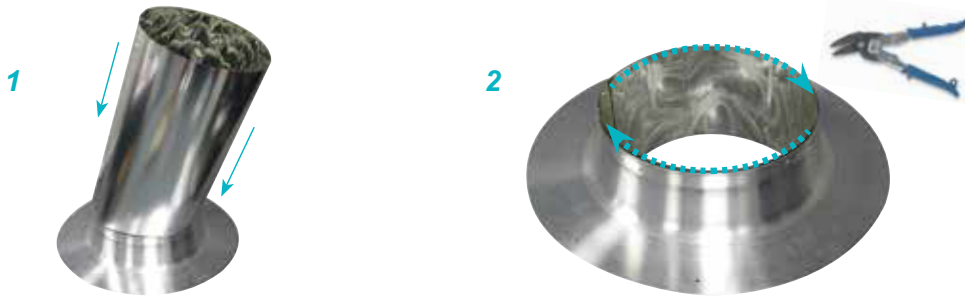
Assembly

ONLY IF YOU CHOSE FLASHING OPTION

#7

ASSEMBLY OF FLASHING OPTION

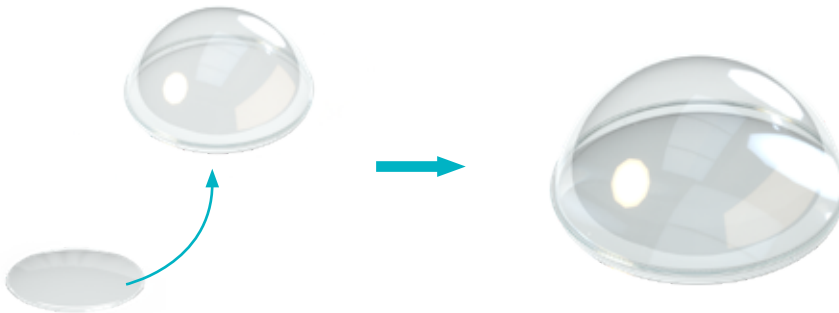
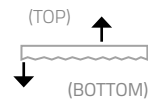
A Insert the tube trough the flashing. Cut off the protruding part.



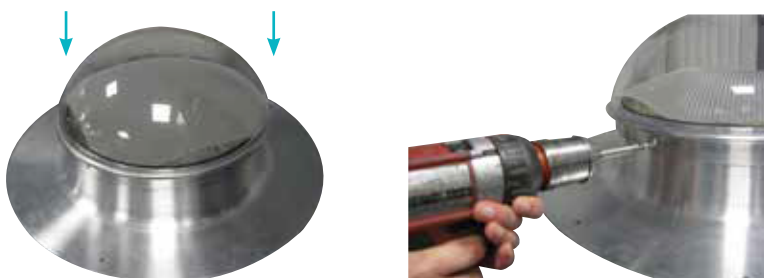
B Push the scatter plate inside the dome until it fits inside the aluminum ring



Veiller à orienter la partie prismatique vers le bas.
Make sure the prismatic part is facing downwards.



C Place the curb mount cover upstand on the flashing and fix it together.

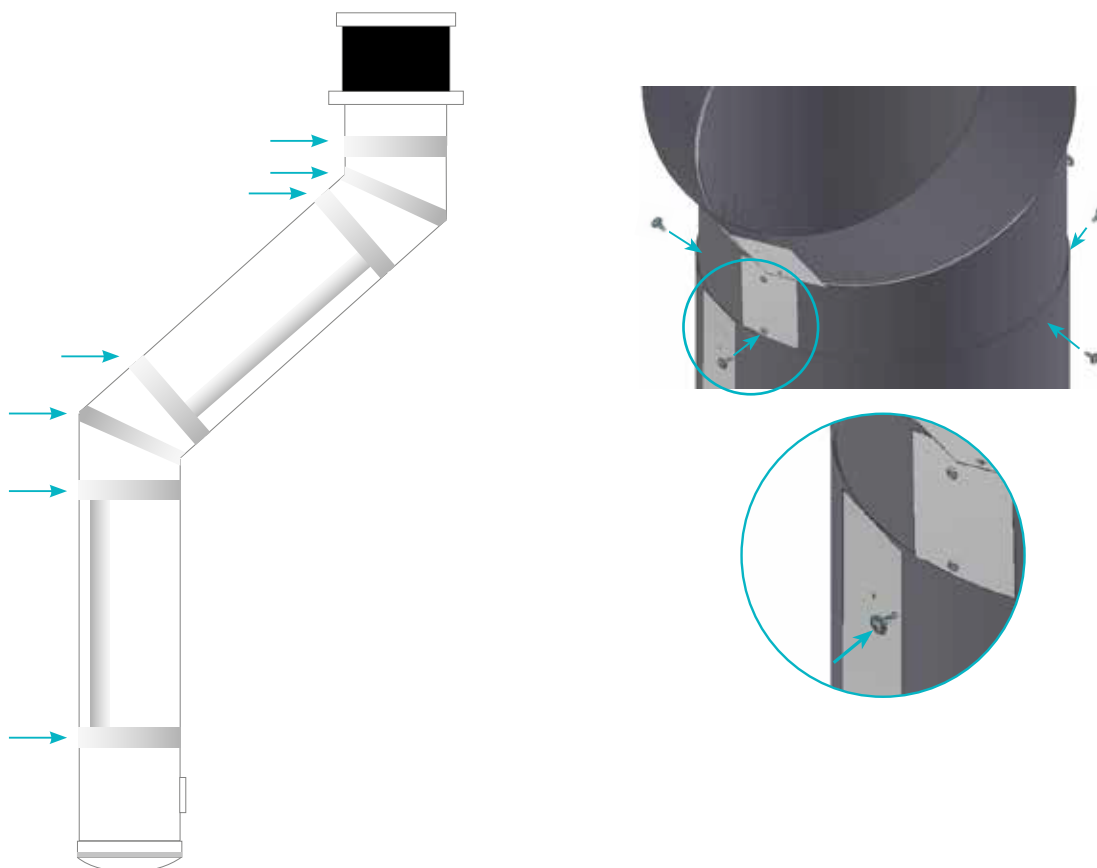


4 screws position equal for 33cm
6 screws position equal for 45 cm

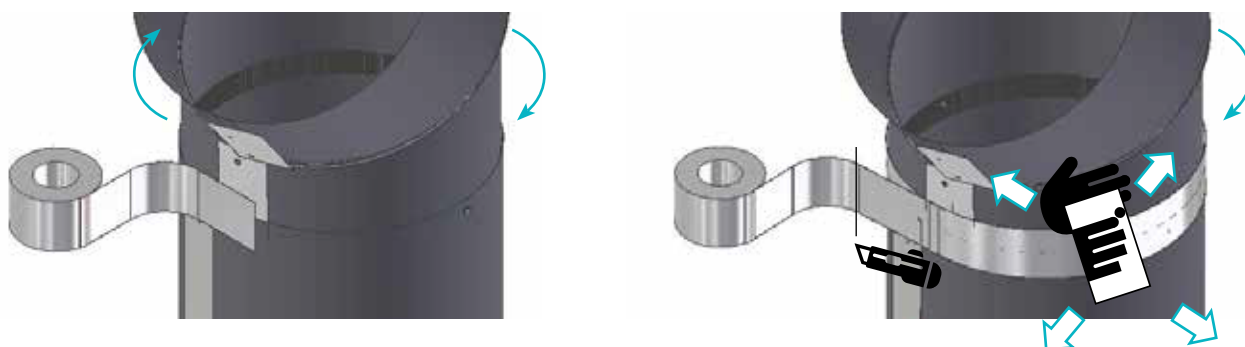


#8 FINAL ASSEMBLY

A Once everything is in position screw everything together.



B Finish by covering the joints with the aluminium adhesive.

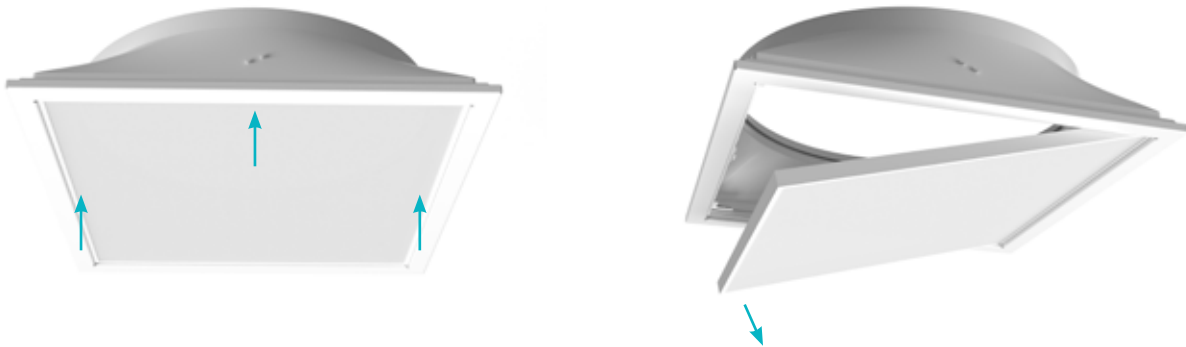


Assembly

#9

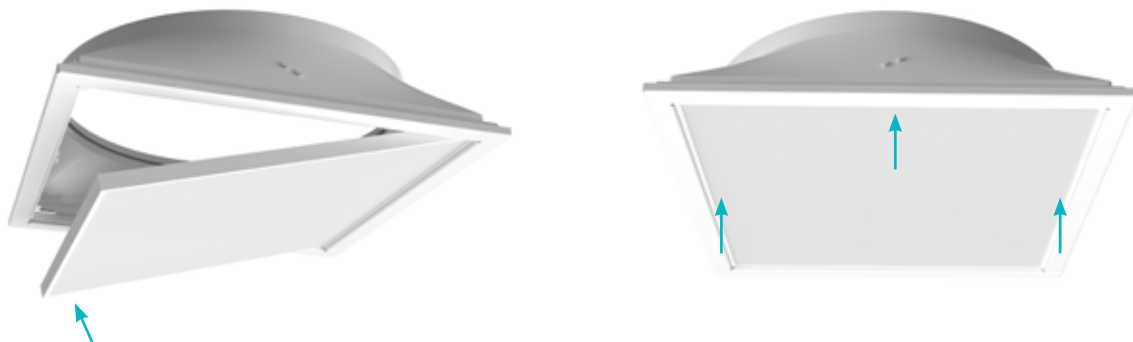
DEASSEMBLY OF THE DIFFUSER FOR CLEANING

- A** Remove the diffuser plate by pushing on the frame (until you hear «click»).



- B** Clean the diffuser with a soft cloth.

- C** Reposition the diffuser plate and apply pressure to the frame (until you hear «click»).



FINISHED ASSEMBLY





adexsiUK

'Find A Better Way'

contact@adexsiuk.com
www.adexsiuk.com

ADEXSI AROUND THE WORLD



// UNITED KINGDOM

Adexsi UK
0044 845 084 0555

// ROMANIA

Adexsi Lumina
0040 723 273 513

// GERMANY

Service technico-commercial
0049 213 118 30

// FRANCE

Service Technico-commercial international
☎ 0033 1 60 37 79 54 / 0033 2 47 55 36 38
☎ 0033 1 60 37 79 65 / 0033 2 47 55 36 01

// MOROCCO

Adexsi Maroc
00212 5 22 67 22 58

// LATIN AMERICA

Service technico-commercial
0051 967 00 60 63