

# Lighttube HOME

## TECHNICAL INSTRUCTIONS FOR INSTALLATION



NATURAL  
LIGHTING

BLUETEK 

- Saves energy by letting in natural light through the roof
- Reduces heat loss thanks to improved upstand insulation



EN 1873



## Technical instructions for the installation of the Lightube home

This installation must be carried out by professionals.  
Make sure that the standard and regulatory documents adapted to the type of roofing are respected. The waterproofing of the roof is guaranteed by the installer.  
Make sure the site is secure, especially the roof access.



### Tools to be provided



*Cutter*



*Measuring tape*



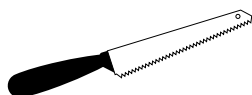
*Socket adaptor Hex*



*Screwdriver*



*Sheet metal shears*



*Cutting tool adapted to the ceiling*



*Phillips screwdriver*



*Phillips socket*



Provided by Bluetek



x1

*Dome*



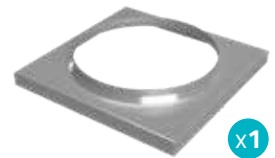
x1

*Scatter*



x2

*Straight tube*



x1

*Curb mount cover upstand*



x1

*Finish ring*



x1

*Ring frame to go inside the plaster board ceiling*



x1

*Home diffuser*



*Neoprene gasket*



x1

*Brush seal with and without plastic center film*



x1

*Aluminium sealing tape*



x1

*Gloves for tube/elbow manipulation*



x8 Ø33  
x10 Ø53

*Screw domed head Phillips  
type 4.2 x 13*



x4 Ø33  
x6 Ø53

*Screw domed head  
4.2 x 25*



x12 Ø33  
x16 Ø53

*Hexagonal head  
5,5 x 25*



*Stainless screw domed head  
4.2 x 25  
(with seal washer)*

## OPTIONS



*Upstand for waterproofed roof*



*Upstand for rénovation*



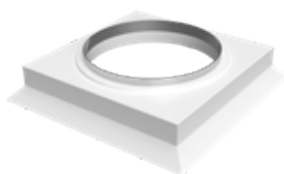
*Upstand for dry roof*



*Curb PVC*



*Flashing*



*Insulated curb top*



*Dimmer kit*



*Elbow A with crimping*

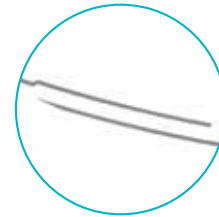
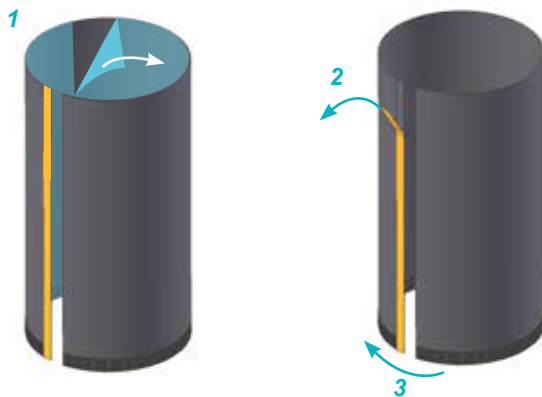


*Elbow B without crimping*



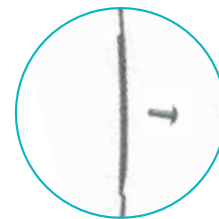
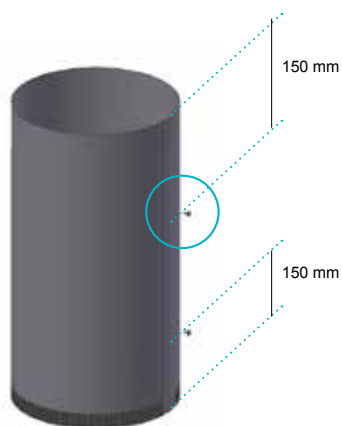
# #1 PRE-ASSEMBLY OF STRAIGHT TUBE

A



Flat spot for assembly point

B



2 screws 4.2 x 13

C



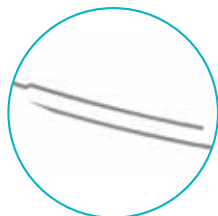
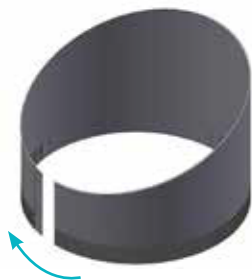
Seal and smooth the tape

Assembly

ONLY IF YOU CHOSE ELBOW OPTION

## #2 PRE-ASSEMBLY OF THE ELBOW

A



Flat spot for assembly point



Screw

1



2



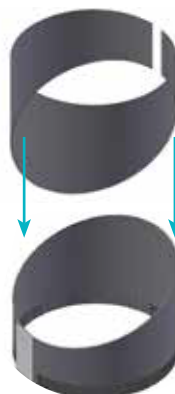
3



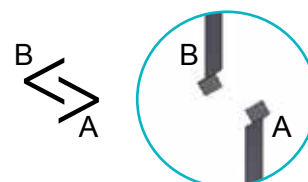
Seal and smooth the tape

B

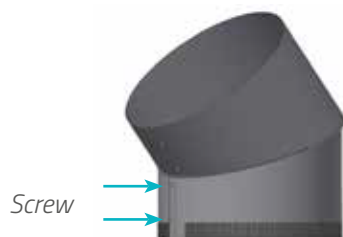
Assemble the two elbows parts



Insert elbow gorge B inside gorge A



C



Screw

Seal and smooth the tape



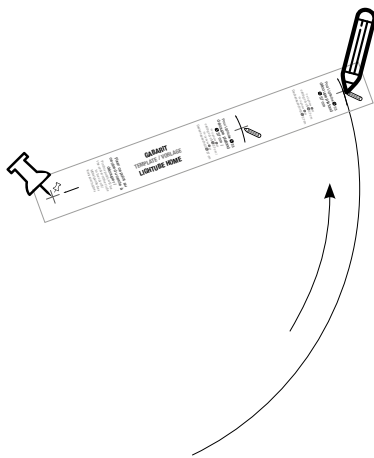
By turning each part to the opposite side, you will obtain an angle between 0° and 45°.



## Assembly

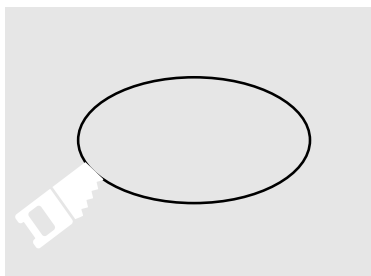
### #3 ASSEMBLY OF THE CIRCLE INSIDE CEILING

- A** Use the cutting template provided to mark the area which will be cut out of the ceiling.

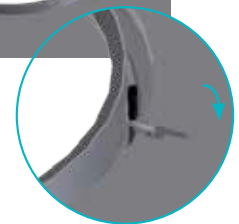


Tube Ø 33 cm : cut will be Ø 37 cm  
Tube Ø 53 cm : cut will be Ø 57 cm

- B** Cut out the area using the appropriate cutting tool for your ceiling.



Glue the dust seal without center plastic film inside the frame ring as high as possible.



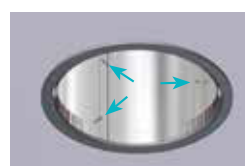
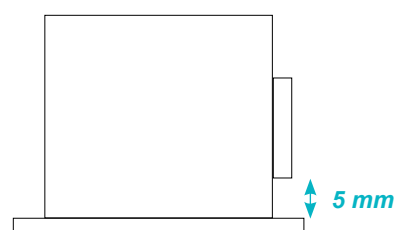
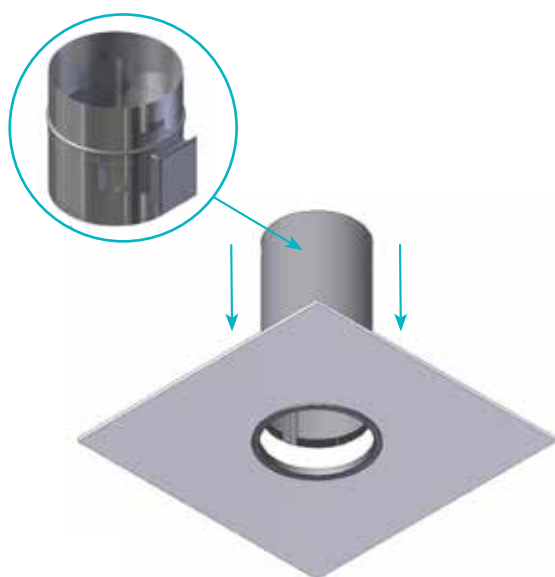
Tighten the screws to rest against the ceiling.

Assembly

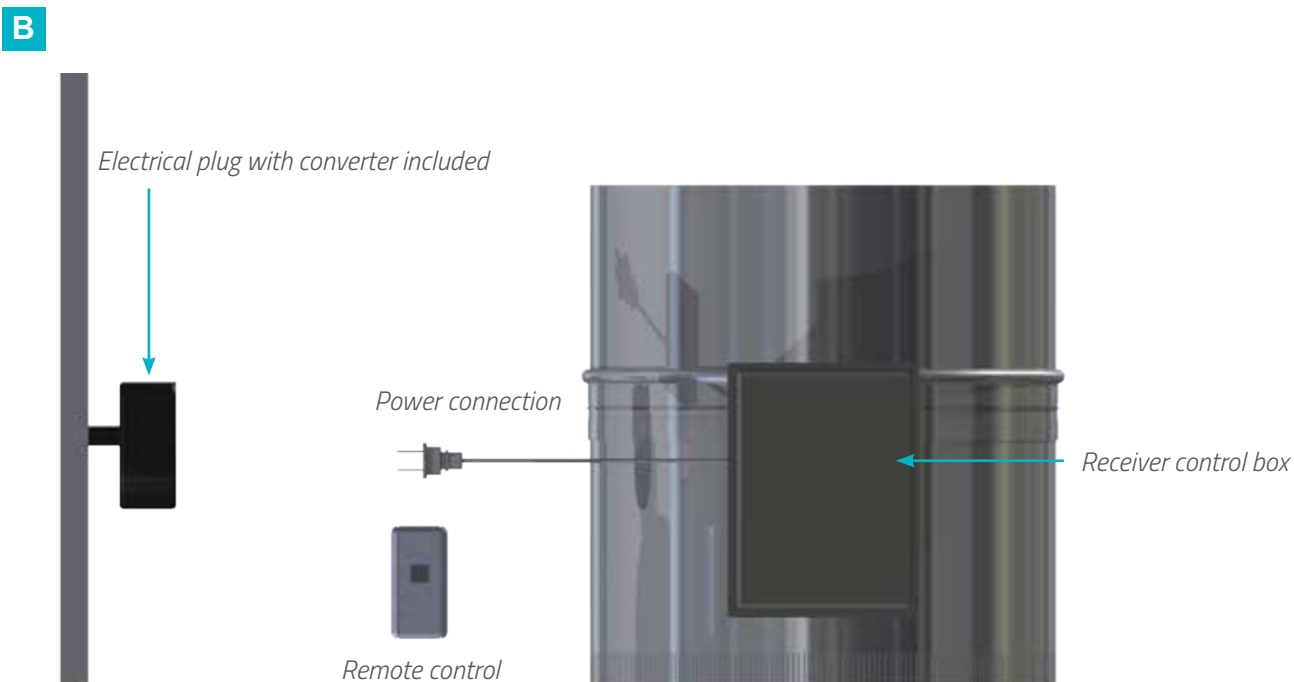
ONLY IF YOU CHOSE DIMMER OPTION

#4  
ASSEMBLY OF DIMMER OPTION

**A** Insert the tube trough the aluminium frame ring.



3 screws 4.2 x 13



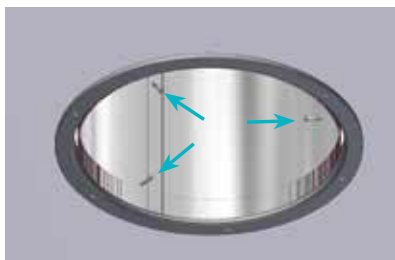
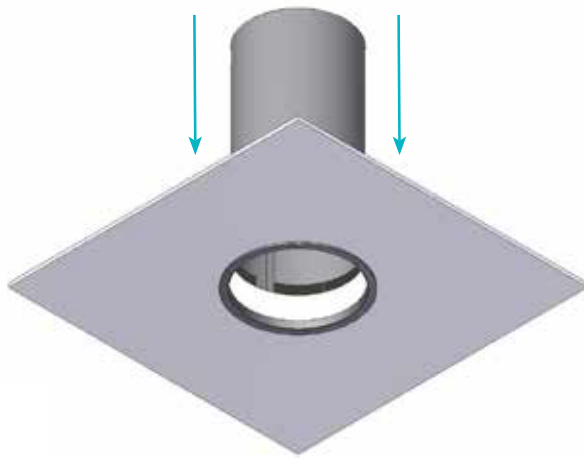
Press the button on the remote control once to activate the dimmer then press again to stop when you obtain the desired amount of light or darkness



## Assembly

### #4 TUBE ASSEMBLY

**A** *Insert the tube trough the aluminium frame ring.*



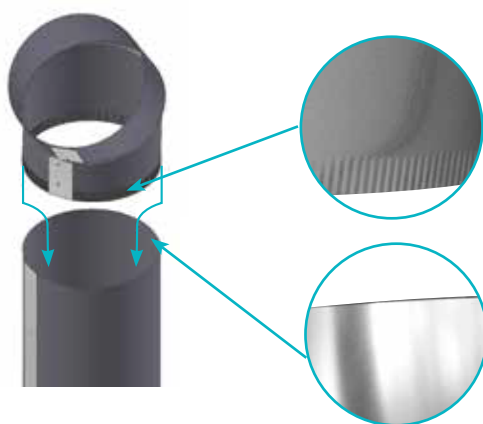
*3 screws 4.2 x 13*

## #5 TUBE ASSEMBLY

Assemble tube (+elbows) starting from the diffuser to the upstand except the last straight tube going inside the upstand. \*



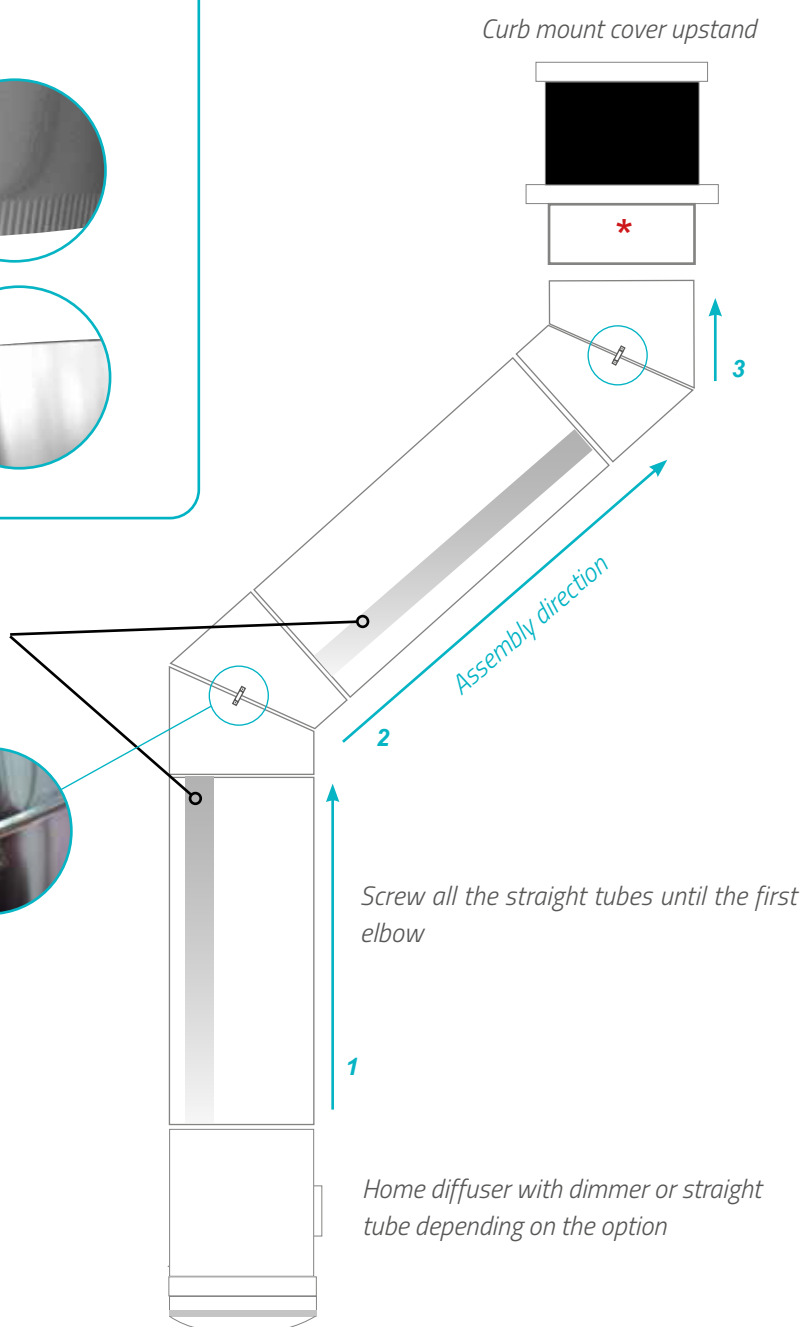
Take care to insert the embossed parts into the smooth lower parts.



Do not adjust all the tape on the same line going through all the installation

For elbows

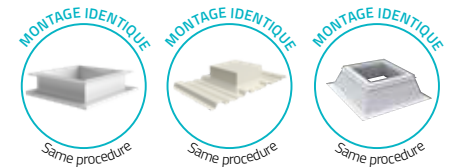
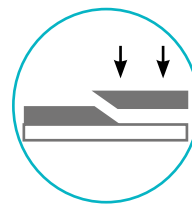
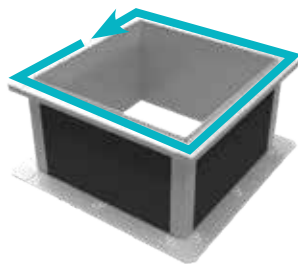
Between each part of the elbows, screw on a holding piece.



# Assembly

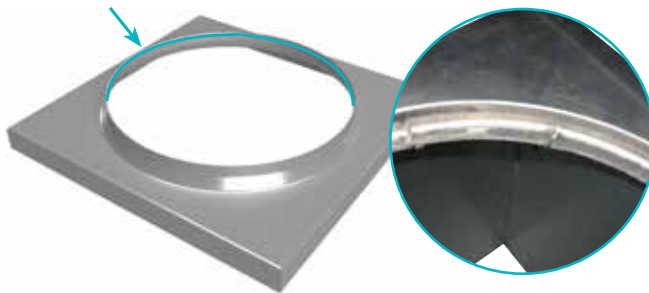
## #6 UPSTAND ASSEMBLY

- A** Position the neoprene gasket on the upstand.

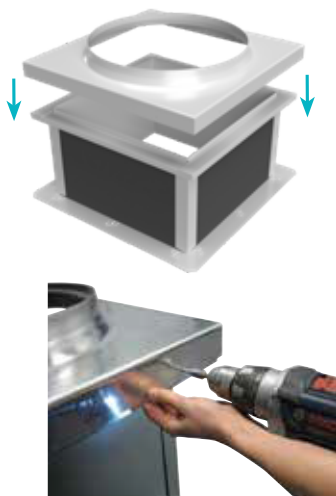


Advice: Do a bevel cut for the junction assembly of the neoprene gasket

- B** Glue the dust seal with the plastic in the center all around the top of the curb mount upstand cover (**10 mm from the top edge**).

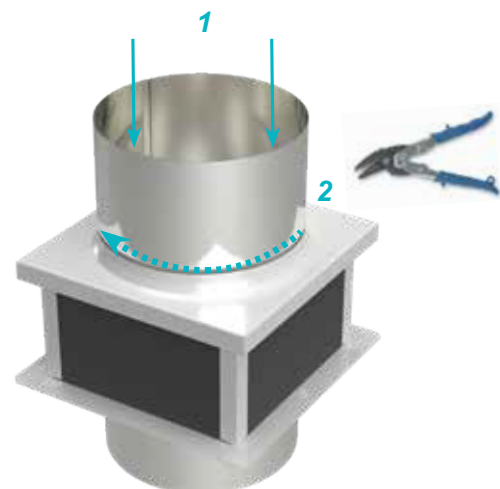


- C** Place the curb mount cover upstand on the upstand and fix it together.



Screw 5,5 x 25

- D** Insert the last part of the tube trough the curb mount cover upstand and cut off the protruding part.

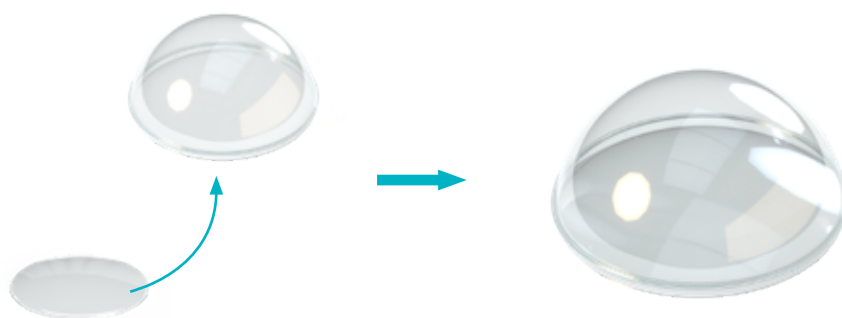
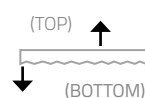


## #6 UPSTAND ASSEMBLY

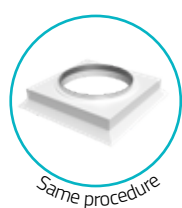
**A** Push the scatter plate inside the dome until it fits inside the aluminum ring



Make sure the prismatic part is facing downwards.



**B** Place the dome on the curb mount cover upstand and fix it.



Stainless screw domed head  
4.2 x 25  
(with seal washer)

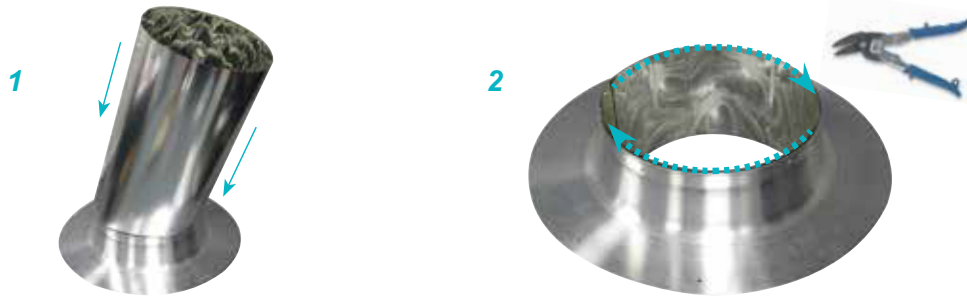


# Assembly

**ONLY IF YOU CHOSE FLASHING OPTION**

## #7 ASSEMBLY OF FLASHING OPTION

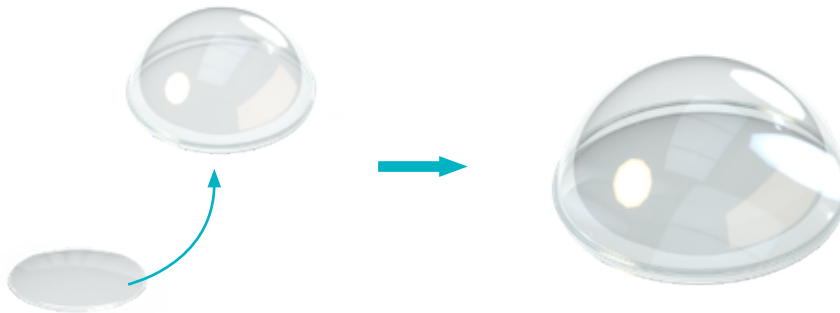
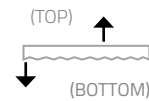
**A** Insert the tube trough the flashing. Cut off the protruding part.



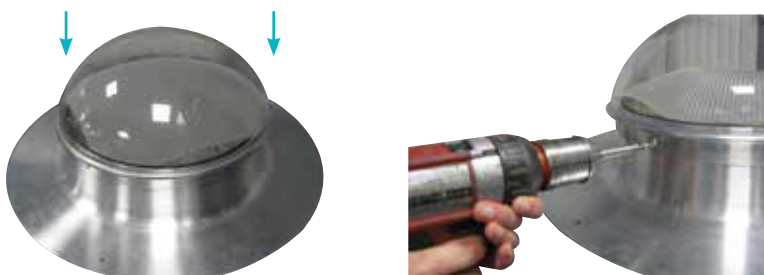
**B** Push the scatter plate inside the dome until it fits inside the aluminum ring



Veiller à orienter la partie prismatique vers le bas.  
Make sure the prismatic part is facing downwards.



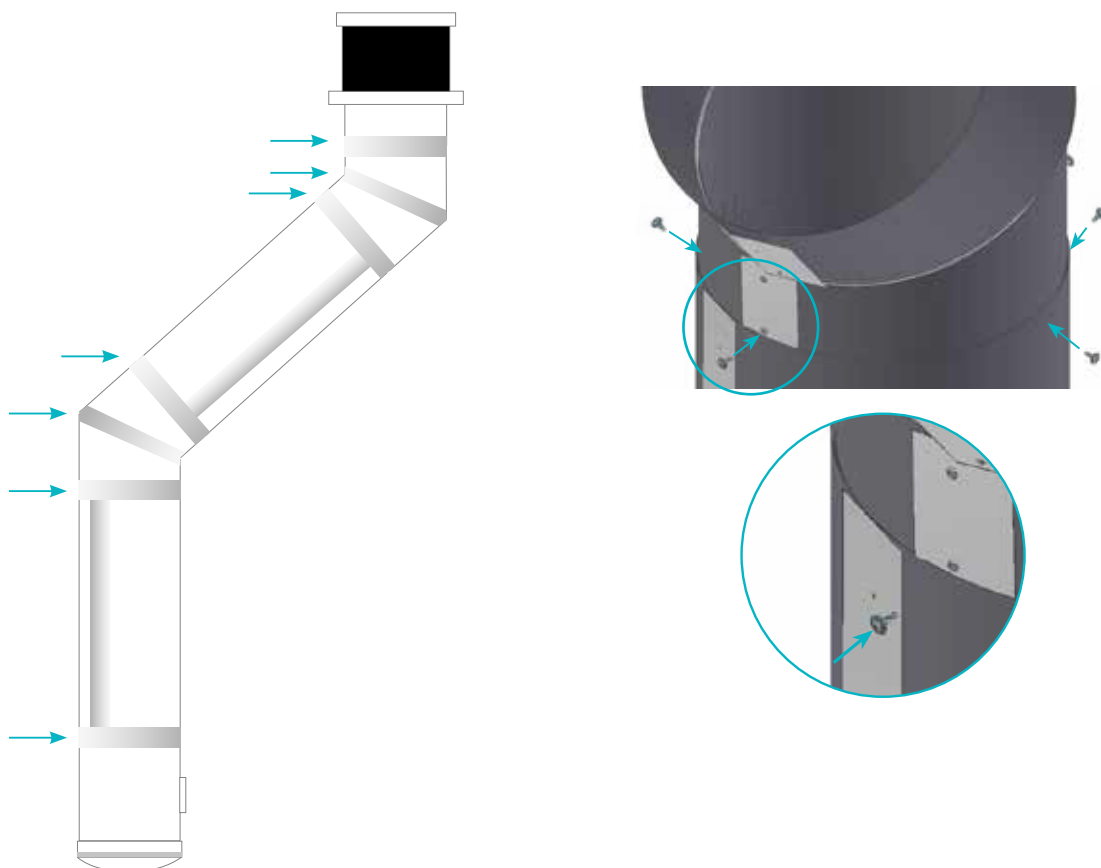
**C** Place the curb mount cover upstand on the flashing and fix it together.



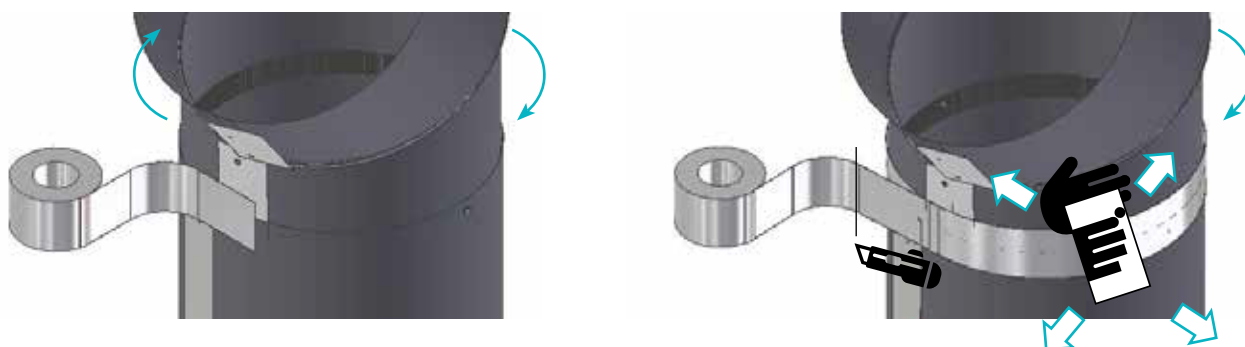
4 screws position equal for 33cm  
6 screws position equal for 45 cm

## #8 FINAL ASSEMBLY

**A** Once everything is in position screw everything together.



**B** Finish by covering the joints with the aluminium adhesive.

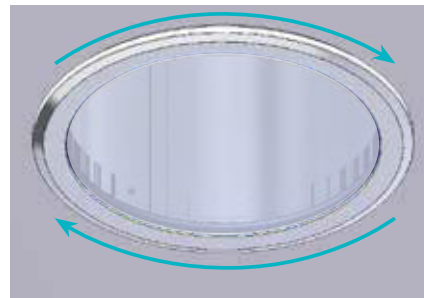
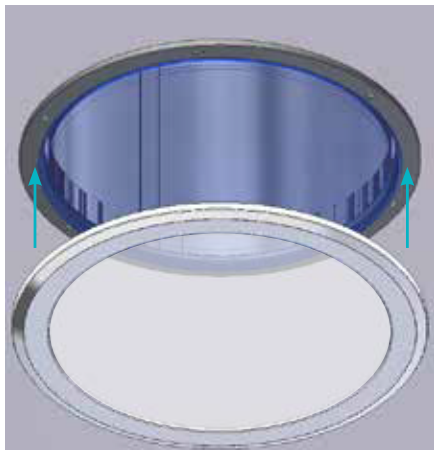


## Assembly

### #8 FINAL ASSEMBLY

**A**

*Place the finishing ring on the frame ring. Secure it by turning it a quarter turn.*



**FINISHED ASSEMBLY**







# adexsiUK

'Find A Better Way'

contact@adexsiuk.com  
www.adexsiuk.com

## ADEXSI AROUND THE WORLD



### // UNITED KINGDOM

Adexsi UK  
0044 845 084 0555

### // ROMANIA

Adexsi Lumina  
0040 723 273 513

### // GERMANY

Service technico-commercial  
0049 213 118 30

### // FRANCE

Service Technico-commercial international  
☎ 0033 1 60 37 79 54 / 0033 2 47 55 36 38  
☎ 0033 1 60 37 79 65 / 0033 2 47 55 36 01

### // MOROCCO

Adexsi Maroc  
00212 5 22 67 22 58

### // LATIN AMERICA

Service technico-commercial  
0051 967 00 60 63